

## INVERTER WELDING MACHINE AUTO DARKENING WELDING HELMET WELDING CABLE



### NINGBO DABU ELECTRIC APPLIANCE CO.,LTD

ADD: East wuxiangRD. 319#, Wuxinang Town, Yinzhou District,  
Ningbo, Zhejiang P.C: 315111  
TEL: 0086+574-88488737  
FAX: 0086+574-88488738  
www.dabugroup.com.cn  
E-mail:dunyuan@dunyuan.com

### NINGBO DABU WELDING TECHNOLOGY CO.,LTD

ADD: No.31,Baotong Rd,Baotong Village, Wuxinang Town,  
Yinzhou District, Ningbo City, Zhejiang P.C: 315111  
TEL: 0086+574-88339848  
FAX: 0086+574-88339848  
www.dabuweld.com  
E-mail: sales@dabuweld.com

www. **dabuweld** .com



# Introduction

## Focus on the welding

Ningbo DABU was established on OCT 2000, is a private high-tech enterprise. It has two companies “Ningbo DABU Electric Appliance Co., Ltd.” and “Ningbo DABU Welding Technology Co.,Ltd”.

Ningbo DABU Welding Technology Co., Ltd was established on May 2011, who is a high-tech enterprise financed by Ningbo DABU Electric Appliance Co., Ltd. DABU welding has solid financial strength with 3million RMB registered capital, 45 million RMB for the total project investment. The company is located on Yinzhou District, Ningbo City. DABU has transport facilities, as it's near to Ningbo airport and Ningbo port, just 30 km. DABU covers a total floor area of 25,000 square meters. DABU also has a strong team with 300staff, 40 of them are engineers. Its annual output is more than 120,000 welding machines and 500,000 welding helmets.

DABU focuses on professional design and manufacture. Its spirit is “market orientation, top quality, technology innovation, sustainable development”.DABU introduces new technology, manufacturing process, testing equipment from Italy and aims at “Foreign Technology, Made in China, Service to the world”. DABU’s guidelines is “scientific management, professional manufacture, best service, high efficiency, constantly innovation”. DABU works on developing, manufacture and sales of welding cable, machine and helmet.Its products include welding cable, welding helmet and all kinds of welding machine, such as, MMA, MIG,WSE,CUT and so on.

So far, the company has passed IOS9001 and other certifications,such as,3C, CE/EMC, GS/CSA, ANSI, SAA, VDE, UL and so on. The company also has more than 90 design patents and 20 technology patents. DABU's copper cable has passed GS certification, which is not the first company bur the only one in China. Its welding helmet has passed DIN-PLUS.

In the market, with the brand's popularity rising, “DABU, CASON,TECWELD” become more popular in international market. As the customer's trust and satisfaction, DABU is enlarging market share. DABU will continue to provide higher quality, better price and service to attain the mutually beneficial cooperation in the future.

**DABU EXTEND A WARM WELCOME TO THE CUSTOMERS AND PARTNERS ALL OVER THE WORLD!**



FACTORY LOCATION 1





## FACTORY LOCATION 1

DABU has the most advanced and efficient modern assembly line, high-tech inspection equipments, full-automatic SMD(surface mounted devices),sheet metal manufacture, blending center and so on.





# 2018 CATALOG

THE JOURNEY BEGAN



## CONTENTS

### MMA WELDER

PAGE 01-11

### TIG WELDER

PAGE 12-16

### MIG/MAG WELDING

PAGE 17-25

### PLASMA CUTTING

PAGE 26-30

### CHARGING -STARTING

PAGE 31-38



### AUTO DARKENING WELDING HELMET

PAGE 39-58

### CABLES

PAGE 59-74

### PLUG

PAGE 75-80

So far, the company has passed IOS9001 and other certifications,such as,3C, CE/EMC, GS/ CSA, ANSI, SAA, VDE, UL and so on. The company also has more than 90 design patents and 20 technology patents. DABU's copper cable has passed GS certification, which is not the first company bur the only one in China. Its welding helmet has passed DIN-PLUS.



# MMA WELDER

## MMA WELDING

MMA welding (metal arc) does not require shielding gas; protection for the weld pool comes from the electrode cover which melts during welding, and forms a protective layer of slag on the weld pool. When the welding is completed and the layer of slag is removed, the finished weld will be discovered underneath.

MMA welding is the oldest and still the most commonly used arc welding process, although the proportion of MMA use is decreasing as gas-shielded welding processes are becoming more popular.

MMA welding is, however, an irreplaceable method for instance when welding outside in windy conditions where using shielding gas would be difficult. Another important benefit is that electrodes can be bought everywhere, also in small packages.

DABU'S range of MMA welding machines offers inverters of DC constant-current type for all user groups from home users to extensive industrial application.





## Features

- MMA inverter, electrode welding machine in direct current(DC)
- Use IGBT technology, greatly improves the reliability of the machine .
- High duty cycle, greatly improves the efficiency of welder, energy saving.
- Cute, stable and durable
- Easy to starting arc, little spatter, stable current, and good formation.
- Acid and basic electrodes are usable
- High no load voltage, good pushing power, compensation force function.
- Widely used in indoor decoration, and high working places jobs.
- Applicable for welding of all kinds of ferrous metals such as low carbon steel, medium carbon steel and alloy steel, etc.



## Features

- MMA inverter, electrode welding machine in direct current(DC)
- Use IGBT technology, greatly improves the reliability of the machine .
- High duty cycle, greatly improves the efficiency of welder, energy saving.
- Cute, stable and durable
- Easy to starting arc, little spatter, stable current, and good formation.
- Acid and basic electrodes are usable
- High no load voltage, good pushing power, compensation force function.
- Widely used in indoor decoration, and high working places jobs.
- Applicable for welding of all kinds of ferrous metals such as low carbon steel, medium carbon steel and alloy steel, etc.



ITEM	MINI-120
Power Voltage(V)	AC 1~230±15%
Rated Input Capacity(KVA)	4.1
Efficiency(%)	85
Power Factor(cosφ)	0.93
No Load Voltage(V)	60
Current Range(A)	10~120
Duty Cycle(%)	60
Usable Electrodes(Ømm)	1.6~4.0
Insulation Degree	F
Protection Degree	IP21S
Measurement(mm)	285X145X215
Weight(kg)	N.W.:2.8 G.W.:4
Dabu Code(No.)	DBA0001

ITEM	MINI-140
Power Voltage(V)	AC 1~230±15%
Rated Input Capacity(KVA)	5.0
Efficiency(%)	85
Power Factor(cosφ)	0.93
No Load Voltage(V)	60
Current Range(A)	10~140
Duty Cycle(%)	60
Usable Electrodes(Ømm)	1.6~4.0
Insulation Degree	F
Protection Degree	IP21S
Measurement(mm)	285X145X215
Weight(kg)	N.W.:2.8 G.W.:4
Dabu Code(No.)	DBA0002



ITEM	MMA-120	MMA-140	MMA-160	MMA-180	MMA-200
Power Voltage(V)	AC AC 1~230±15%	AC 1~230±15%	AC 1~230±15%	AC 1~230±15%	AC 1~230±15%
Rated Input Capacity(KVA)	4.1	5.0	5.8	6.8	7.8
Efficiency(%)	85	85	85	85	85
Power Factor(cosφ)	0.93	0.93	0.93	0.93	0.93
No Load Voltage(V)	60	60	60	60	60
Current Range(A)	10~120	10~140	10~160	10~180	10~200
Duty Cycle(%)	40	40	60	60	60
Usable Electrodes(Ømm)	1.6~3.2	1.6~4.0	1.6~4.0	1.6~4.0	1.6~5.0
Insulation Degree	F	F	F	F	F
Protection Degree	IP21S	IP21S	IP21S	IP21S	IP21S
Measurement(mm)	320X130X230	320X130X230	345X140X235	345X140X235	345X140X235
Weight(kg)	N.W.:2.8 G.W.:4.2	N.W.:2.8 G.W.:4.2	N.W.:3.5 G.W.:4.9	N.W.:3.5 G.W.:4.9	N.W.:3.5 G.W.:4.9
Dabu Code(No.)	DBA0003	DBA0004	DBA0005	DBA0006	DBA0007



## Features

- MMA inverter, electrode welding machine in direct current(DC)
- Use IGBT technology, greatly improves the reliability of the machine .
- High duty cycle, greatly improves the efficiency of welder, energy saving.
- Cute, stable and durable
- Easy to starting arc, little spatter, stable current, and good formation.
- Acid and basic electrodes are usable
- High no load voltage, good pushing power, compensation force function.
- Widely used in indoor decoration, and high working places jobs.
- Applicable for welding of all kinds of ferrous metals such as low carbon steel, medium carbon steel and alloy steel, etc.

### OPTIONAL



### STANDARD



## Features

- MMA inverter, electrode welding machine in direct current(DC)
- Use IGBT technology, greatly improves the reliability of the machine .
- High duty cycle, greatly improves the efficiency of welder, energy saving.
- Cute, stable and durable
- Easy to starting arc, little spatter, stable current, and good formation.
- Acid and basic electrodes are usable
- High no load voltage, good pushing power, compensation force function.
- Widely used in indoor decoration, and high working places jobs.
- Applicable for welding of all kinds of ferrous metals such as low carbon steel, medium carbon steel and alloy steel, etc.

### OPTIONAL



### STANDARD



ITEM	MMA-120	MMA-140	MMA-160	MMA-180	MMA-200
Power Voltage(V)	AC 1~230±15%	AC 1~230±15%	AC 1~230±15%	AC 1~230±15%	AC 1~230±15%
Rated Input Capacity(KVA)	4.1	5.0	5.8	6.8	7.8
Efficiency(%)	85	85	85	85	85
Power Factor(cosφ)	0.93	0.93	0.93	0.93	0.93
No Load Voltage(V)	60	60	60	60	60
Current Range(A)	10~120	10~140	10~160	10~180	10~200
Duty Cycle(%)	40	40	60	60	60
Usable Electrodes(Ømm)	1.6~3.2	1.6~4.0	1.6~4.0	1.6~4.0	1.6~5.0
Insulation Degree	F	F	F	F	F
Protection Degree	IP21S	IP21S	IP21S	IP21S	IP21S
Measurement(mm)	415x175x255	415x175x255	425x195x285	425x195x285	425x195x285
Weight(kg)	N.W.:3.1 G.W.:4.3	N.W.:3.1 G.W.:4.3	N.W.:3.7 G.W.:5.1	N.W.:3.7 G.W.:5.1	N.W.:3.7 G.W.:5.1
Dabu Code(No.)	DBA0008	DBA0009	DBA0010	DBA0011	DBA0012

ITEM	MMA-120	MMA-140	MMA-160	MMA-180	MMA-200
Power Voltage(V)	AC 1~230±15%	AC 1~230±15%	AC 1~230±15%	AC 1~230±15%	AC 1~230±15%
Rated Input Capacity(KVA)	4.1	5.0	5.8	6.8	7.8
Efficiency(%)	85	85	85	85	85
Power Factor(cosφ)	0.93	0.93	0.93	0.93	0.93
No Load Voltage(V)	60	60	60	60	60
Current Range(A)	10~120	10~140	10~160	10~180	10~200
Duty Cycle(%)	40	40	60	60	60
Usable Electrodes(Ømm)	1.6~3.2	1.6~4.0	1.6~4.0	1.6~4.0	1.6~5.0
Insulation Degree	F	F	F	F	F
Protection Degree	IP21S	IP21S	IP21S	IP21S	IP21S
Measurement(mm)	375x175x260	375x175x260	445x175x260	445x175x260	445x175x260
Weight(kg)	N.W.:3.1 G.W.:4.3	N.W.:3.1 G.W.:4.3	N.W.:3.7 G.W.:5.1	N.W.:3.7 G.W.:5.1	N.W.:3.7 G.W.:5.1
Dabu Code(No.)	DBA0013	DBA0014	DBA0015	DBA0016	DBA0017



## Features

- MMA inverter, electrode welding machine in direct current(DC)
- Use IGBT technology, greatly improves the reliability of the machine .
- High duty cycle, greatly improves the efficiency of welder, energy saving.
- Cute, stable and durable
- Easy to starting arc, little spatter, stable current, and good formation.
- Acid and basic electrodes are usable
- High no load voltage, good pushing power, compensation force function.
- Widely used in indoor decoration, and high working places jobs.
- Applicable for welding of all kinds of ferrous metals such as low carbon steel, medium carbon steel and alloy steel, etc.
- Single-phase, fan-cooled, compact and light, high welding current stability in spite of mains voltage fluctuations, arc force, hot start and anti-stick devices, thermostatic, over voltage, under voltage, over current, motor generator(±15%) protections.



## Features

- MMA inverter, electrode welding machine in direct current(DC)
- Use IGBT technology, greatly improves the reliability of the machine .
- High duty cycle, greatly improves the efficiency of welder, energy saving.
- Cute, stable and durable
- Easy to starting arc, little spatter, stable current, and good formation.
- Acid and basic electrodes are usable
- High no load voltage, good pushing power, compensation force function.
- Widely used in indoor decoration, and high working places jobs.
- Applicable for welding of all kinds of ferrous metals such as low carbon steel, medium carbon steel and alloy steel, etc.
- Single-phase, fan-cooled, compact and light, high welding current stability in spite of mains voltage fluctuations, arc force, hot start and anti-stick devices, thermostatic, over voltage, under voltage, over current, motor generator(±15%) protections.



ITEM	MMA-140	MMA-160	MMA-180	MMA-200	MMA-220
Power Voltage(V)	AC 1~230±15%	AC 1~230±15%	AC 1~230±15%	AC 1~230±15%	AC 1~230±15%
Rated Input Capacity(KVA)	5.0	5.8	6.8	7.8	8.8
Efficiency(%)	85	85	85	85	85
Power Factor(cosφ)	0.93	0.93	0.93	0.93	0.93
No Load Voltage(V)	60	60	60	60	60
Current Range(A)	20~140	20~160	20~180	20~200	20~220
Duty Cycle(%)	60	60	60	60	60
Usable Electrodes(Ømm)	1.6~4.0	1.6~4.0	1.6~4.0	1.6~5.0	1.6~5.0
Insulation Degree	F	F	F	F	F
Protection Degree	IP21S	IP21S	IP21S	IP21S	IP21S
Measurement(mm)	395x195x285	395x195x285	420x195x285	420x195x285	460x195x285
Weight(kg)	N.W.:5.5 G.W.:6.9	N.W.:6 G.W.:7.4	N.W.:6 G.W.:7.4	N.W.:6.5 G.W.:7.9	N.W.:7.1 G.W.:8.5
Dabu Code(No.)	DBA0018	DBA0019	DBA0020	DBA0021	DBA0022

ITEM	MMA-140	MMA-160	MMA-180	MMA-200	MMA-220
Power Voltage(V)	AC 1~230±15%	AC 1~230±15%	AC 1~230±15%	AC 1~230±15%	AC 1~230±15%
Rated Input Capacity(KVA)	5.0	5.8	6.8	7.8	8.8
Efficiency(%)	85	85	85	85	85
Power Factor(cosφ)	0.93	0.93	0.93	0.93	0.93
No Load Voltage(V)	60	60	60	60	60
Current Range(A)	20~140	20~160	20~180	20~200	20~220
Duty Cycle(%)	60	60	60	60	60
Usable Electrodes(Ømm)	1.6~4.0	1.6~4.0	1.6~4.0	1.6~5.0	1.6~5.0
Insulation Degree	F	F	F	F	F
Protection Degree	IP21S	IP21S	IP21S	IP21S	IP21S
Measurement(mm)	465x205x320	465x205x320	465x205x320	465x205x320	465x205x320
Weight(kg)	N.W.:6 G.W.:7.4	N.W.:6.5 G.W.:7.9	N.W.:6.5 G.W.:7.9	N.W.:7 G.W.:8.4	N.W.:7.6 G.W.:9
Dabu Code(No.)	DBA0023	DBA0024	DBA0025	DBA0026	DBA0027



## Features

- MMA inverter, electrode welding machine in direct current(DC)
- Use IGBT technology, greatly improves the reliability of the machine .
- High duty cycle, greatly improves the efficiency of welder, energy saving.
- Cute, stable and durable
- Easy to starting arc, little spatter, stable current, and good formation.
- Acid and basic electrodes are usable
- High no load voltage, good pushing power, compensation force function.
- Widely used in indoor decoration, and high working places jobs.
- Applicable for welding of all kinds of ferrous metals such as low carbon steel, medium carbon steel and alloy steel, etc.
- Single-phase, fan-cooled, compact and light, high welding current stability in spite of mains voltage fluctuations, arc force, hot start and anti-stick devices, thermostatic, over voltage, under voltage, over current, motor generator( $\pm 15\%$ ) protections.

### OPTIONAL



### STANDARD



## Features

- MMA inverter, electrode welding machine in direct current(DC)
- Use IGBT technology, greatly improves the reliability of the machine .
- High duty cycle, greatly improves the efficiency of welder, energy saving.
- Cute, stable and durable
- Easy to starting arc, little spatter, stable current, and good formation.
- Acid and basic electrodes are usable
- High no load voltage, good pushing power, compensation force function.
- Widely used in indoor decoration, and high working places jobs.
- Applicable for welding of all kinds of ferrous metals such as low carbon steel, medium carbon steel and alloy steel, etc.
- Single-phase, fan-cooled, compact and light, high welding current stability in spite of mains voltage fluctuations, arc force, hot start and anti-stick devices, thermostatic, over voltage, under voltage, over current, motor generator( $\pm 15\%$ ) protections.

### STANDARD



ITEM	MMA-140	MMA-160	MMA-180	MMA-200	MMA-220
Power Voltage(V)	AC 1~230 $\pm 15\%$	AC 1~230 $\pm 15\%$	AC 1~230 $\pm 15\%$	AC 1~230 $\pm 15\%$	AC 1~230 $\pm 15\%$
Rated Input Capacity(KVA)	5.0	5.8	6.8	7.8	8.8
Efficiency(%)	85	85	85	85	85
Power Factor(cos $\phi$ )	0.93	0.93	0.93	0.93	0.93
No Load Voltage(V)	60	60	60	60	60
Current Range(A)	20~140	20~160	20~180	20~200	20~220
Duty Cycle(%)	60	60	60	60	60
Usable Electrodes( $\phi$ mm)	1.6~4.0	1.6~4.0	1.6~4.0	1.6~5.0	1.6~5.0
Insulation Degree	F	F	F	F	F
Protection Degree	IP21S	IP21S	IP21S	IP21S	IP21S
Measurement(mm)	375X175X260	415X175X260	480X210X330	480X210X330	480X210X330
Weight(kg)	N.W.:5.7 G.W.:7.1	N.W.:6.2 G.W.:7.6	N.W.:6.2 G.W.:7.6	N.W.:6.7 G.W.:8.1	N.W.:7.6 G.W.:9
Dabu Code(No.)	DBA0028	DBA0029	DBA0030	DBA0031	DBA0032

ITEM	MMA-250	MMA-315	MMA-400
Power Voltage(V)	AC 3~380V $\pm 15\%$	AC 3~380V $\pm 15\%$	AC 3~380V $\pm 15\%$
Rated Input Capacity(KVA)	8.7	11.9	16.6
Efficiency(%)	85	85	85
Power Factor(cos $\phi$ )	0.93	0.93	0.93
No Load Voltage(V)	67	67	67
Current Range(A)	20~250	20~315	20~400
Duty Cycle(%)	60	60	60
Usable Electrodes( $\phi$ mm)	1.6~5.0	1.6~6.0	1.6~6.0
Insulation Degree	H	H	H
Protection Degree	IP21	IP21	IP21
Measurement(mm)	495X285X425	495X285X425	495X285X425
Weight(kg)	N.W.:9.1 G.W.:11	N.W.:9.1 G.W.:11	N.W.:10 G.W.:12
Dabu Code(No.)	DBA0033	DBA0034	DBA0035



## Features

- MMA inverter, electrode welding machine in direct current(DC)
- Use IGBT technology, greatly improves the reliability of the machine .
- High duty cycle, greatly improves the efficiency of welder, energy saving.
- Cute, stable and durable
- Easy to starting arc, little spatter, stable current, and good formation.
- Acid and basic electrodes are usable
- High no load voltage, good pushing power, compensation force function.
- Widely used in indoor decoration, and high working places jobs.
- Applicable for welding of all kinds of ferrous metals such as low carbon steel, medium carbon steel and alloy steel, etc.
- Three-phase, fan-cooled, compact and light, high welding current stability in spite of mains voltage fluctuations, arc force, hot start and anti-stick devices, thermostatic, over voltage, under voltage, over current, motor generator( $\pm 15\%$ ) protections.

### STANDARD



ITEM	MMA-315	MMA-400	MMA-500	MMA-630
Power Voltage(V)	AC 3~380 $\pm 15\%$	AC 3~380 $\pm 15\%$	AC 3~380 $\pm 15\%$	AC 3~380 $\pm 15\%$
Rated Input Capacity(KVA)	13	18.2	25.3	32
Efficiency(%)	85	85	85	85
Power Factor(cos $\phi$ )	0.93	0.93	0.93	0.93
No Load Voltage(V)	60	67	80	80
Current Range(A)	40~315	40~400	50~500	60~630
Duty Cycle(%)	60	60	60	60
Usable Electrodes( $\phi$ mm)	2.5~5.0	2.5~5.0	2.5~5.0	2.5~6.0
Insulation Degree	F	F	F	F
Protection Degree	IP21S	IP21S	IP21S	IP21S
Measurement(mm)	670X330X565	670X330X565	670X330X565	670X330X565
Weight(kg)	N.W.:33 G.W.:40	N.W.:38 G.W.:50	N.W.:43 G.W.:55	N.W.:45 G.W.:57
Dabu Code(No.)	DBA0036	DBA0037	DBA0038	DBA0039

# TIG WELDER

## TIG WELDING

In TIG welding (tungsten inert gas), the welding arc is formed between a non-consumable tungsten electrode and the base material. Argon, which is most commonly used as the shielding gas, is fed through the TIG torch to shield the electrode and molten weld pool. The current is either alternating or direct current, which can be pulsed as necessary.

### DC TIG welding

The direct-current TIG welding process is suitable for welding unalloyed and low-alloy steels, stainless steels and titanium.

### AC TIG welding

Alternating-current TIG, of AC TIG welding is particularly suitable for welding aluminum and aluminum alloys. The primary area of application for AC TIG welding is use with materials, but the process is also used frequently in repair welding for thicker aluminum pieces.



## Features

- Advanced inverter technology, high working frequency, compact size and weight, easy to carry
- Stable and reliable welding current.
- Low No-load loss, low energy consumption
- Applicable for welding of ferrous-metals, medium carbon steel and alloy steel, etc.

**MOS**  
TECHNOLOGY



### OPTIONAL



### STANDARD



ITEM	TIG-160
Power Voltage(V)	AC 1~230 $\pm 15\%$
Rated Input Capacity(KVA)	5.8
No-Load Voltage(V)	56
Output Current Range(A)	10~160
Duty Cycle(%)	60
Efficiency(%)	85
Welding Thickness( $\phi$ mm)	0.3~5
Insulation Degree	F
Protection Degree	IP21S
Measurement(mm)	420X175X220
Weight(kg)	N.W.:7.5 G.W.:10.5
Dabu Code(No.)	DBT0012

ITEM	TIG-200
Power Voltage(V)	AC 1~230 $\pm 15\%$
Rated Input Capacity(KVA)	7.8
No-Load Voltage(V)	56
Output Current Range(A)	10~200
Duty Cycle(%)	60
Efficiency(%)	85
Welding Thickness( $\phi$ mm)	0.3~8
Insulation Degree	F
Protection Degree	IP21S
Measurement(mm)	420X175X220
Weight(kg)	N.W.:7.5 G.W.:10.5
Dabu Code(No.)	DBT0013





DC INVERTER **TIG/MMA WELDER**



DC INVERTER **TIG/MMA WELDER**

Features

- Advanced inverter technology, high working frequency, compact size and weight, easy to carry
- Stable and reliable welding current.
- Low No-load loss, low energy consumption
- Applicable for welding of ferrous-metals, medium carbon steel and alloy steel, etc.

OPTIONAL



STANDARD



MOS  
TECHNOLOGY



ITEM	TIG-160
Power Voltage(V)	AC 1~230±15%
Rated Input Capacity(KVA)	5.8
No-Load Voltage(V)	56
Output Current Range(A)	10~160
Duty Cycle(%)	60
Efficiency(%)	85
Welding Thickness(δmm)	0.3~5
Insulation Degree	F
Protection Degree	IP21S
Measurement(mm)	530X205X320
Weight(kg)	N.W.:7 G.W.:10
Dabu Code(No.)	DBT0001

ITEM	TIG-200
Power Voltage(V)	AC 1~230±15%
Rated Input Capacity(KVA)	7.8
No-Load Voltage(V)	56
Output Current Range(A)	10~200
Duty Cycle(%)	60
Efficiency(%)	85
Welding Thickness(δmm)	0.3~8
Insulation Degree	F
Protection Degree	IP21S
Measurement(mm)	530X205X320
Weight(kg)	N.W.:7 G.W.:10
Dabu Code(No.)	DBT0002



MOS  
TECHNOLOGY



ITEM	TIG-160
Power Voltage(V)	AC 1~230±15%
Rated Input Capacity(KVA)	5.8
No-Load Voltage(V)	56
Output Current Range(A)	10~160
Duty Cycle(%)	60
Efficiency(%)	85
Welding Thickness(δmm)	0.3~5
Insulation Degree	F
Protection Degree	IP21S
Measurement(mm)	480X210X330
Weight(kg)	N.W.:7.5 G.W.:10.5
Dabu Code(No.)	DBT0003

ITEM	TIG-200
Power Voltage(V)	AC 1~230±15%
Rated Input Capacity(KVA)	7.8
No-Load Voltage(V)	56
Output Current Range(A)	10~200
Duty Cycle(%)	60
Efficiency(%)	85
Welding Thickness(δmm)	0.3~8
Insulation Degree	F
Protection Degree	IP21S
Measurement(mm)	480X210X330
Weight(kg)	N.W.:7.5 G.W.:10.5
Dabu Code(No.)	DBT0004





### Features

- Advanced inverter technology, high working frequency, compact size and weight, easy to carry
- Stable and reliable welding current.
- Low No-load loss, low energy consumption
- Applicable for welding of ferrous-metals, medium carbon steel and alloy steel, etc.

#### OPTIONAL



#### STANDARD



### Features

- Quality square wave power supply, stable arc, HF arc stabilization not necessary;
- Concentrated heat, easy to fill in the wire, especially suitable for wire welding in bicycle industry, etc;
- Foot pedal controller connection facilitates welder's operation;
- Built-in alarming and protective circuits are provided to prevent over current, over heat, over voltage, low voltage, etc and ensure safe operation;
- High duty cycle, continuous operation without interruption at large current is available;
- Suitable for welding of various metallic materials such as aluminum, aluminum alloy, carbon steel, stainless steel, copper, titanium, etc.

#### STANDARD



**MOS**  
TECHNOLOGY



ITEM	TIG-160
Power Voltage(V)	AC 1~230±15%
Rated Input Capacity(KVA)	5.8
No-Load Voltage(V)	56
Output Current Range(A)	10~160
Duty Cycle(%)	60
Efficiency(%)	85
Welding Thickness(δmm)	0.3~5
Insulation Degree	F
Protection Degree	IP21S
Measurement(mm)	530X205X320
Weight(kg)	N.W.:7.5 G.W.:10.5
Dabu Code(No.)	DBT0005

ITEM	TIG-200
Power Voltage(V)	AC 1~230±15%
Rated Input Capacity(KVA)	7.8
No-Load Voltage(V)	56
Output Current Range(A)	10~200
Duty Cycle(%)	60
Efficiency(%)	85
Welding Thickness(δmm)	0.3~8
Insulation Degree	F
Protection Degree	IP21S
Measurement(mm)	530X205X320
Weight(kg)	N.W.:7.5 G.W.:10.5
Dabu Code(No.)	DBT0006



**MOS**  
TECHNOLOGY



ITEM	WSE-200	WSE-250	WSME-200	WSME-250	WSME-300
Power Voltage(V)	AC 1~230±15%	AC 1~230±15%	AC 1~230±15%	AC 3~380V±15%	AC 3~380V±15%
Rated Input Capacity(KVA)	7.8	10.4	7.8	8.7	11
Output Current Range(A)	10~200	10~250	10~200	10~250	10~300
Preheat Time(S)	0~2	0~2	0~2	0~2	0~2
Delay Time(S)	2~10	2~10	2~10	2~10	2~10
Attenuated Time(S)	0~5	0~5	0~5	0~5	0~5
Arc Strike Time	HF	HF	HF	HF	HF
No-Load Voltage(V)	56	56	56	56	56
Insulation Class	F	F	F	F	F
Duty Cycle(%)	35	35	35	35	35
Efficiency(%)	85	85	85	85	85
Protection Degree	IP21S	IP21S	IP21S	IP21S	IP21S
Measurement(mm)	555X405X425	555X405X425	555X405X425	555X405X425	555X405X425
Weight(kg)	N.W.:19.5 G.W.:22	N.W.:20 G.W.:22.5	N.W.:19.5 G.W.:22	N.W.:20 G.W.:22.5	N.W.:20.5 G.W.:23
Dabu Code(No.)	DBT0007	DBT0008	DBT0009	DBT0010	DBT0011



# MIG/MAG WELDING

## MIG/MAG WELDING

MIG/MAG welding is a semiautomatic welding process where the welding arc is formed between the material being welded and the welding wire fed through the welding gun. The filler wire is fed mechanically by the wire feeder.

To protect the molten weld pool, shielding gas is also fed through the welding gun. The MIG process uses inert shielding gas (metal inert gas welding): Usually the shielding gas contains active carbon dioxide or oxygen, and therefore the most commonly used type of MIG/MAG is MAG welding.

MIG/MAG is the most common welding method in today's welding industry, but is also becoming more and more popular with hobby users. Benefits of this method include high weld deposition rate and welding speed easy mechanisation and automation and wide rage of uses.

## Features

- Single-phase, portable, fan-cooled wire welding machine for flux(no gas) and MIG/MAG(gas)welding
- With thermal protection, complete with MIG welding accessories.
- The kit for welding different types of materials such as steel, stainless steel.
- Steel and aluminum is available on request.

### OPTIONAL

Ø200 mm



### STANDARD



ITEM	MIG-120	MIG-140	MIG-160	MIG-180
Power Voltage(V)	AC 1~230±15%	AC 1~230±15%	AC 1~230±15%	AC 1~230±15%
Rated Input Capacity(KVA)	4.7	5.2	6.3	7.2
Efficiency(%)	80	80	85	85
Power Factor(cosφ)	0.93	0.93	0.93	0.93
No Load Voltage(V)	36	36	38	38
Current Range(A)	40~120	40~140	50~160	60~180
Duty Cycle(%)	10	10	10	10
Welding Wire (Ømm)	0.6~0.8	0.6~0.8	0.6~1.0	0.6~1.0
Insulation Degree	F	F	F	F
Protection Degree	IP21S	IP21S	IP21S	IP21S
Measurement(mm)	510X280X390	510X280X390	510X280X390	510X280X390
Weight(kg)	N.W.:13 G.W.:16.4	N.W.:13 G.W.:16.4	N.W.:13 G.W.:16.4	N.W.:13 G.W.:16.4
Dabu Code(No.)	DBM0021	DBM0022	DBM0023	DBM0024



## Features

- Single-phase, portable, fan-cooled wire welding machine for flux(no gas) and MIG/MAG(gas)welding
- With thermal protection, complete with MIG welding accessories.
- The kit for welding different types of materials such as steel, stainless steel.
- Steel and aluminum is available on request.

### OPTIONAL

Ø200 mm



### STANDARD



## Features

- Single-phase, portable, fan-cooled wire welding machine for flux(no gas) and MIG/MAG(gas)welding
- With thermal protection, complete with MIG welding accessories.
- The kit for welding different types of materials such as steel, stainless steel.
- Steel and aluminum is available on request.

### OPTIONAL

Ø200 mm



### STANDARD



ITEM	MIG-140	MIG-160	MIG-180	MIG-200
Power Voltage(V)	AC 1~230±15%	AC 1~230±15%	AC 1~230±15%	AC 1~230±15%
Rated Input Capacity(KVA)	4.1	4.9	5.7	6.6
Efficiency(%)	85	85	85	85
Power Factor(cosφ)	0.93	0.93	0.93	0.93
No Load Voltage(V)	56	56	56	56
Current Range(A)	30~140	30~160	30~180	30~200
Duty Cycle(%)	40	40	40	40
Welding Wire (Ømm)	0.6~1.0	0.6~1.0	0.8~1.0	0.8~1.0
Insulation Degree	F	F	F	F
Protection Degree	IP21S	IP21S	IP21S	IP21S
Measurement(mm)	495X255X345	505X265X385	505X265X385	505X265X385
Weight(kg)	N.W.:9 G.W.:12.4	N.W.:11 G.W.:14.4	N.W.:11 G.W.:14.4	N.W.:11 G.W.:14.4
Dabu Code(No.)	DBM0001	DBM0002	DBM0003	DBM0004

ITEM	MIG-160	MIG-180	MIG-200
Power Voltage(V)	AC 1~230±15%	AC 1~230±15%	AC 1~230±15%
Rated Input Capacity(KVA)	4.9	5.7	6.6
Efficiency(%)	85	85	85
Power Factor(cosφ)	0.93	0.93	0.93
No Load Voltage(V)	56	56	56
Current Range(A)	30~160	30~180	30~200
Duty Cycle(%)	40	40	40
Welding Wire (Ømm)	0.6~1.0	0.8~1.0	0.8~1.0
Insulation Degree	F	F	F
Protection Degree	IP21S	IP21S	IP21S
Measurement(mm)	525X380X380	525X380X380	525X380X380
Weight(kg)	N.W.:13 G.W.:16.4	N.W.:13 G.W.:16.4	N.W.:13 G.W.:16.4
Dabu Code(No.)	DBM0005	DBM0006	DBM0007



## Features

- Single-phase, portable, fan-cooled wire welding machine for flux(no gas) and MIG/MAG(gas)welding
- With thermal protection, complete with MIG welding accessories.
- The kit for welding different types of materials such as steel, stainless steel.
- Steel and aluminum is available on request.

**STANDARD**

## STANDARD



## Features

- Suitable for sheet over 0.8mm
- Cost saving and efficiency improving
- With wire machine, and easy and considerable for operation
- High welding speed, high arcing success rate
- Continuous and discontinuous welding function
- Automatic voltage pulsation compensation capability
- Suitable for carbon steel, alloy steel, soft steel, etc and various wire
- Little spatter, uniform welding pool, good welding shape.

## STANDARD



ITEM	MIG-200
Power Voltage(V)	AC 1~230±15%
Rated Input Capacity(KVA)	6.6
Efficiency(%)	85
Power Factor(cosφ)	0.93
No Load Voltage(V)	56
Current Range(A)	30~200
Duty Cycle(%)	60
Welding Wire (Ømm)	0.8~1.0
Insulation Degree	H
Protection Degree	IP21S
Measurement(mm)	710X450X590
Weight(kg)	N.W.:32 G.W.:45
Dabu Code(No.)	DBM0008

ITEM	MIG-250
Power Voltage(V)	AC 1~230±15%
Rated Input Capacity(KVA)	9.2
Efficiency(%)	85
Power Factor(cosφ)	0.93
No Load Voltage(V)	56
Current Range(A)	30~250
Duty Cycle(%)	60
Welding Wire (Ømm)	0.8~1.2
Insulation Degree	H
Protection Degree	IP21S
Measurement(mm)	710X450X590
Weight(kg)	N.W.:33 G.W.:46
Dabu Code(No.)	DBM0009



ITEM	MIG-350
Power Voltage(V)	AC 3~380V±15%
Rated Input Capacity(KVA)	13.8
Efficiency(%)	85
Power Factor(cosφ)	0.93
No Load Voltage(V)	60
Current Range(A)	30~350
Duty Cycle(%)	60
Welding Wire (Ømm)	0.8~1.0
Insulation Degree	H
Protection Degree	IP21S
Measurement(mm)	670X330X565
Weight(kg)	N.W.:35 G.W.:42
Dabu Code(No.)	DBM0010

ITEM	MIG-500
Power Voltage(V)	AC 3~380V±15%
Rated Input Capacity(KVA)	23.1
Efficiency(%)	85
Power Factor(cosφ)	0.93
No Load Voltage(V)	67
Current Range(A)	30~500
Duty Cycle(%)	60
Welding Wire (Ømm)	0.8~1.2
Insulation Degree	H
Protection Degree	IP21S
Measurement(mm)	670X330X565
Weight(kg)	N.W.:40 G.W.:52
Dabu Code(No.)	DBM0011

ITEM	MIG-630
Power Voltage(V)	AC 3~380V±15%
Rated Input Capacity(KVA)	32
Efficiency(%)	85
Power Factor(cosφ)	0.93
No Load Voltage(V)	67
Current Range(A)	30~630
Duty Cycle(%)	60
Welding Wire (Ømm)	0.8~1.2
Insulation Degree	H
Protection Degree	IP21S
Measurement(mm)	670X330X565
Weight(kg)	N.W.:45 G.W.:57
Dabu Code(No.)	DBM0012



## Features

- Suitable for sheet over 0.8mm
- Cost saving and efficiency improving
- With wire machine, and easy and considerable for operation
- High welding speed, high arcing success rate
- Continuous and discontinuous welding function
- Automatic voltage pulsation compensation capability
- Suitable for carbon steel, alloy steel, soft steel, etc and various wire
- Little spatter, uniform welding pool, good welding shape.

### STANDARD



### STANDARD



## Features

- Single-phase, fan-cooled, wire welding machine on wheels for MIG welding.
- Designed for continuous and spot welding with electronic regulation of spot welding time.
- Flexibility of use with a wide range of materials such as steel, stainless steel and aluminum.
- Complete with MIG-MAG welding accessories.

### STANDARD



### STANDARD



ITEM	MIG-250
Power Voltage(V)	AC 3~380V±15%
Rated Input Capacity(KVA)	8.7
Efficiency(%)	85
Power Factor(cosφ)	0.93
No Load Voltage(V)	56
Current Range(A)	30~250
Duty Cycle(%)	60
Welding Wire (Ømm)	0.8~1.2
Insulation Degree	H
Protection Degree	IP21S
Measurement(mm)	710X450X590
Weight(kg)	N.W.:33 G.W.:46
Dabu Code(No.)	DBM0014

ITEM	MIG-315
Power Voltage(V)	AC 3~380V±15%
Rated Input Capacity(KVA)	11.9
Efficiency(%)	85
Power Factor(cosφ)	0.93
No Load Voltage(V)	56
Current Range(A)	30~315
Duty Cycle(%)	60
Welding Wire (Ømm)	0.8~1.2
Insulation Degree	H
Protection Degree	IP21S
Measurement(mm)	710X450X590
Weight(kg)	N.W.:34 G.W.:47
Dabu Code(No.)	DBM0015

ITEM	MIG-350
Power Voltage(V)	AC 3~380V±15%
Rated Input Capacity(KVA)	13.8
Efficiency(%)	85
Power Factor(cosφ)	0.93
No Load Voltage(V)	60
Current Range(A)	30~350
Duty Cycle(%)	60
Welding Wire (Ømm)	0.8~1.0
Insulation Degree	H
Protection Degree	IP21S
Measurement(mm)	670X330X565
Weight(kg)	N.W.:35 G.W.:42
Dabu Code(No.)	DBM0010



ITEM	MIG-200
Power Voltage(V)	AC 3~380V±15%
Rated Input Capacity(KVA)	6.5
Efficiency(%)	80
Power Factor(cosφ)	0.93
No Load Voltage(V)	31
Current Range(A)	50-200
Duty Cycle(%)	40%
Welding Wire (Ømm)	0.8-1.0
Insulation Degree	F
Protection Degree	IP21S
Measurement(mm)	790X430X890
Weight(kg)	N.W.:67 G.W.:83
Dabu Code(No.)	DBM0016

ITEM	MIG-250
Power Voltage(V)	AC 3~380V±15%
Rated Input Capacity(KVA)	8.9
Efficiency(%)	80
Power Factor(cosφ)	0.93
No Load Voltage(V)	33
Current Range(A)	50~250
Duty Cycle(%)	40%
Welding Wire (Ømm)	0.8~1.2
Insulation Degree	F
Protection Degree	IP21S
Measurement(mm)	790X430X890
Weight(kg)	N.W.:74 G.W.:90
Dabu Code(No.)	DBM0017

ITEM	MIG-315
Power Voltage(V)	AC 3~380V±15%
Rated Input Capacity(KVA)	12.6
Efficiency(%)	80
Power Factor(cosφ)	0.93
No Load Voltage(V)	38
Current Range(A)	60~315
Duty Cycle(%)	40%
Welding Wire (Ømm)	0.8~1.2
Insulation Degree	F
Protection Degree	IP21S
Measurement(mm)	790X430X890
Weight(kg)	N.W.:84 G.W.:100
Dabu Code(No.)	DBM0018



## Features

- Single-phase, fan-cooled, wire welding machine on wheels for MIG welding.
- Designed for continuous and spot welding with electronic regulation of spot welding time.
- Flexibility of use with a wide range of materials such as steel, stainless steel and aluminum.
- Complete with MIG-MAG welding accessories.

### STANDARD



### STANDARD



ITEM	MIG-350
Power Voltage(V)	AC 3~380V±15%
Rated Input Capacity(KVA)	14.8
Efficiency(%)	80
Power Factor(cosφ)	0.93
No Load Voltage(V)	40
Current Range(A)	60~350
Duty Cycle(%)	40
Welding Wire (Ømm)	0.8~1.2
Insulation Degree	F
Protection Degree	IP21S
Measurement(mm)	950X550X980
Weight(kg)	N.W.:107 G.W.:130
Dabu Code(No.)	DBM0019

ITEM	MIG-500
Power Voltage(V)	AC 3~380V±15%
Rated Input Capacity(KVA)	26.2
Efficiency(%)	80
Power Factor(cosφ)	0.93
No Load Voltage(V)	48
Current Range(A)	60~500
Duty Cycle(%)	40
Welding Wire (Ømm)	0.8~1.6
Insulation Degree	F
Protection Degree	IP21S
Measurement(mm)	950X550X980
Weight(kg)	N.W.:153 G.W.:176
Dabu Code(No.)	DBM0020

# PLASMA CUTTING

Air plasma cutting machine is a new type of thermal cutting equipment, and its working principle is based on compressed air as working gas, to high-temperature high-speed plasma arc as heat source, while melting partial cutting metal, the high-speed airflow would blow off melted metal, forming a narrow kerf.

The device can be used for stainless steel, aluminum, copper, cast iron, carbon steel and other metal cutting, not only the cutting speed, kerf, narrow incision formation, heat-affected zone is small, but also the workpiece is not easy to get deformed. It's of simple operation, and also has significant energy-saving effect. The device is applicable to all kinds of machinery, metal structures manufacturing, installation and maintenance, for medium, thin sheet cutting, drilling, open groove cutting, etc.





Features

- Cutting capacity increased 1.8 times higher in cutting speed compare with flame cutter
- Thick metal plate can be cut easily and quickly.
- Suitable for cutting stainless steel, copper, iron and aluminum metal etc.
- Simple operation, smooth cutting surface.
- Hf touched Arc-starting cutting(30,40)

OPTIONAL



STANDARD



Features

- Cutting capacity increased 1.8 times higher in cutting speed compare with flame cutter
- Thick metal plate can be cut easily and quickly.
- Suitable for cutting stainless steel, copper, iron and aluminum metal etc.
- Simple operation, smooth cutting surface.
- Hf touched Arc-starting cutting(30,40)

OPTIONAL



STANDARD



ITEM	CUT-30
Power Voltage(V)	AC 1~230±15%
Rated Input Capacity(KVA)	3.8
No-Load Voltage(V)	240
Current Range(A)	15~30
Rated Output Voltage(V)	92
Rated Duty Cycle(%)	60
Efficiency(%)	85
Insulation Class	F
Cprotection Class	IP21S
Cutting Thickness(δmm)	1~8
Measurement(mm)	530X205X320
Weight(kg)	N.W.:7.5 G.W.:11
Dabu Code(No.)	DBC0001

ITEM	CUT-40
Power Voltage(V)	AC 1~230±15%
Rated Input Capacity(KVA)	5.3
No-Load Voltage(V)	240
Current Range(A)	15~40
Rated Output Voltage(V)	96
Rated Duty Cycle(%)	60
Efficiency(%)	85
Insulation Class	F
Cprotection Class	IP21S
Cutting Thickness(δmm)	1~12
Measurement(mm)	530X205X320
Weight(kg)	N.W.:7.5 G.W.:11
Dabu Code(No.)	DBC0002



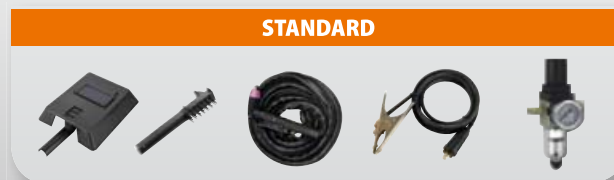
ITEM	CUT-30
Power Voltage(V)	AC 1~230±15%
Rated Input Capacity(KVA)	3.8
No-Load Voltage(V)	240
Current Range(A)	15~30
Rated Output Voltage(V)	92
Rated Duty Cycle(%)	60
Efficiency(%)	85
Insulation Class	F
Cprotection Class	IP21S
Cutting Thickness(δmm)	1~8
Measurement(mm)	530X205X320
Weight(kg)	N.W.:8 G.W.:11.5
Dabu Code(No.)	DBC0003

ITEM	CUT-40
Power Voltage(V)	AC 1~230±15%
Rated Input Capacity(KVA)	5.3
No-Load Voltage(V)	240
Current Range(A)	15~40
Rated Output Voltage(V)	96
Rated Duty Cycle(%)	60
Efficiency(%)	85
Insulation Class	F
Cprotection Class	IP21S
Cutting Thickness(δmm)	1~12
Measurement(mm)	530X205X320
Weight(kg)	N.W.:8 G.W.:11.5
Dabu Code(No.)	DBC0004



### Features

- Cutting capacity increased 1.8 times higher in cutting speed compare with flame cutter
- Thick metal plate can be cut easily and quickly.
- Suitable for cutting stainless steel, copper, iron and aluminum metal etc.
- Simple operation, smooth cutting surface.
- Hf touched Arc-starting cutting(60,100,120)



### Features

- Three in one welder(MMA,TIG,CUT)
- Anti-stick, thermostatic protection ,automatic voltage compesation capability, less splash
- Sutable for cutting carbon steel, stainless steel, alloy stell, copper, aluminum and so on.
- Simple operation , Economic and practical
- Accessories: CUT torch, TIG torch, electrode holder, earth clamp, brush/hammer, protective mask, carton box.



ITEM	CUT-60
Power Voltage(V)	AC 3~380V±15%
Rated Input Capacity(KVA)	7.2
No-Load Voltage(V)	270
Current Range(A)	20~60
Rated Output Voltage(V)	104
Rated Duty Cycle(%)	60
Efficiency(%)	85
Insulation Class	H
Cprotection Class	IP21S
Cutting Thickness(δmm)	1~20
Measurement(mm)	715x325x490
Weight(kg)	N.W.:31 G.W.:35
Dabu Code(No.)	DBC0005

ITEM	CUT-100
Power Voltage(V)	AC 3~380V±15%
Rated Input Capacity(KVA)	13.9
No-Load Voltage(V)	300
Current Range(A)	20~100
Rated Output Voltage(V)	120
Rated Duty Cycle(%)	60
Efficiency(%)	85
Insulation Class	H
Cprotection Class	IP21S
Cutting Thickness(δmm)	1~25
Measurement(mm)	715x325x490
Weight(kg)	N.W.:31 G.W.:35
Dabu Code(No.)	DBC0006

ITEM	CUT-120
Power Voltage(V)	AC 3~380V±15%
Rated Input Capacity(KVA)	17.8
No-Load Voltage(V)	300
Current Range(A)	20~120
Rated Output Voltage(V)	128
Rated Duty Cycle(%)	60
Efficiency(%)	85
Insulation Class	H
Cprotection Class	IP21S
Cutting Thickness(δmm)	1~30
Measurement(mm)	715x325x490
Weight(kg)	N.W.:31 G.W.:35
Dabu Code(No.)	DBC0007

ITEM	CT-312
Power Voltage(V)	AC 1~230±15%
Rated Input Capacity(KVA)	3.8
Efficiency(%)	85
Power Factor(cosφ)	0.93
Current Range(A)	MMA10~110 TIG10~120 CUT15~30
Duty Cycle(%)	60
Cutting Thickness(mm)	1~6
Insulation Degree	F
Protection Degree	IP21S
Measurement(mm)	610x230x395
Weight(kg)	N.W.:7 G.W.:12.5
Dabu Code(No.)	DBC0008

ITEM	CT-416
Power Voltage(V)	AC 1~230±15%
Rated Input Capacity(KVA)	5.4
Efficiency(%)	85
Power Factor(cosφ)	0.93
Current Range(A)	MMA10~150 TIG10~160 CUT15~40
Duty Cycle(%)	60
Cutting Thickness(mm)	1~8
Insulation Degree	F
Protection Degree	IP21S
Measurement(mm)	610x230x395
Weight(kg)	N.W.:12 G.W.:17.5
Dabu Code(No.)	DBC0009

ITEM	CT-520
Power Voltage(V)	AC 1~230±15%
Rated Input Capacity(KVA)	7.8
Efficiency(%)	85
Power Factor(cosφ)	0.93
Current Range(A)	MMA10~180 TIG10~200 CUT15~50
Duty Cycle(%)	60
Cutting Thickness(mm)	1~12
Insulation Degree	F
Protection Degree	IP21S
Measurement(mm)	610x230x395
Weight(kg)	N.W.:13 G.W.:18.5
Dabu Code(No.)	DBC0010



# CHARGING -STARTING

## CHARGING-STARTING

Battery charger is used to charge lead-acid battery in small care and trucks. it is worked by transformer to lower the voltage, rectifier to rectify and then charge lead-acid battery by connecting overload protector on two heads of the battery. It has very simple and reliable circuit, lowers the machine faulty rate to min. Battery charger also has fast and slow charging switch, can fast charge battery and also protect battery from overcharging. When battery is discharging, the over current protector can protect machine from being damaged by big current. The machine is good looking, novel and portable.





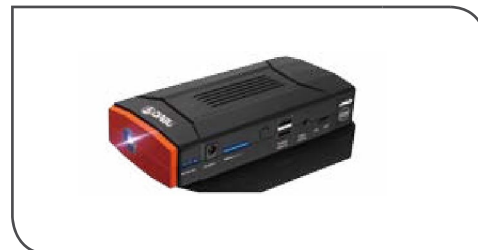
## Features

The MA series lead-acid battery charger is professional designed according to the power battery of electric vehicles equipment. It use the advanced soft switch technology, with small size, convenient installation, high conversion efficiency, running fully loaded for a long time, stable output current, large capacity, high reliability, long life features etc. With short-circuited protect, low-voltage protect, overheated protect function. The long delay digital counter can ensure the battery from the constant voltage to the float charge reliably every time. Avoid the lost control of battery heat caused by the the high temperature. Let the damage of battery drop to the lowest caused by the dehydration and the polar plate vulcanize which are the two general problems of charger.



## Features

- Modern design and high performance.
- Simple operations and maintenance.
- Equipment with selector for normal or quick charge
- Compact, light and portable.
- Provide with completed kits, equipped with ammeter.



ITEM	MA-1210	MA-1220A	MA-1230A	MA-2410A	MA-2415A	MA-10S	MA-15S
Input Voltage	AC 1~230±15%	AC 1~230±15%	AC 1~230±15%	AC 1~230±15%	AC 1~230±15%	AC 1~230±15%	AC 1~230±15%
Input Power(W)	180	350	500	350	500	180/350	350/500
Rated Voltage(V)	12	12	12	24	24	12/24 AUTO	12/24 AUTO
Constant Charge Current(A)	10A±5% unadjustable	5-20A±5% adjustable	6-30A±5% adjustable	3-10A±5% adjustable	5-15A±5% adjustable	3-10A±5% adjustable	5-15A±5% adjustable
Constant Charge Voltage(V)	14.5-14.8	14.5-14.8	14.5-14.8	29-29.6	29-29.6	14.5-14.8 29-29.6	14.5-14.8 29-29.6
Floating Voltage(V)	13.8	13.8	13.8	27.8	27.8	13.8	13.8V
Rated Reference Capacity(Ah)	30-150	30-300	50-450	30-200	50-300	30-200	50-300
Charge Mode	Three-step	Four-step	Four-step	Four-step	Four-step	Four-step	Four-step
Weight(kg)	0.7	1.5	1.9	1.5	1.9	1.5	1.9
Measurement(mm)	225X135X90	305X145X100	325X165X105	305X145X100	325X165X105	305X145X100	325X165X105
Dabu Code(No.)	DBD0001	DBD0002	DBD0003	DBD0004	DBD0005	DBD0006	DBD0007

ITEM	CB-10	CB-15	CB-18	CB-20	CB-30	CB-40	CB-50
Input Voltage	AC 1~230±15%	AC 1~230±15%	AC 1~230±15%	AC 1~230±15%	AC 1~230±15%	AC 1~230±15%	AC 1~230±15%
Input Power(W)	140	250	390	450	560	710	850
Charge Voltage(V)	12/24	12/24	12/24	12/24	12/24	12/24	12/24
Rated Charge Current(A)	3	7	10	12	16	20	25
Boost Current(A)	5	9	14	16	20	25	30
Rated Reference Capacity(Ah)	20-90	20-150	30-210	30-210	40-250	50-300	50-400
Insulation Degree	H	H	H	H	H	H	H
Protection Degree	IP20S	IP20S	IP20S	IP20S	IP20S	IP20S	IP20S
Weight(kg)	5	6	7	7.5	8.5	10	11.5
Measurement(mm)	295x245x220	295x245x220	295x245x220	295x245x220	295x245x220	345x305x250	345x305x250
Dabu Code(No.)	DBD0008	DBD0009	DBD0010	DBD0011	DBD0012	DBD0013	DBD0014



## Features

- Modern design and high performance.
- Simple operations and maintenance.
- Equipment with selector for normal or quick charge
- Compact, light and portable.
- Provide with completed kits, equipped with ammeter.



## Features

- Single phase, battery chargers & starters.
- For charging lead-acid batteries with 12/24V, and starting all kinds of cars, vans, light trucks, tractors and trucks.
- Automatic thermistor protection.
- Choice of normal charge, quick change(boost) and quick start.
- Timer for quick change.



ITEM	CD-10	CD-15	CD-18	CD-20	CD-30	CD-40	CD-50
Input Voltage	AC 1~230±15%	AC 1~230±15%	AC 1~230±15%	AC 1~230±15%	AC 1~230±15%	AC 1~230±15%	AC 1~230±15%
Input Power(W)	140	250	390	450	560	710	850
Charge Voltage(V)	12/24	12/24	12/24	12/24	12/24	12/24	12/24
Rated Charge Current(A)	3	7	10	12	16	20	25
Boost Current(A)	5	9	14	16	20	25	30
Rated Reference Capacity(Ah)	20-90	20-150	30-210	30-210	40-250	50-300	50-400
Insulation Degree	H	H	H	H	H	H	H
Protection Degree	IP20S	IP20S	IP20S	IP20S	IP20S	IP20S	IP20S
Weight(kg)	4.5	5.5	6.5	7	8	9.5	11
Measurement(mm)	340x235x235	340x235x235	340x235x235	340x235x235	340x235x235	400x295x260	400x295x260
Dabu Code(No.)	DBD0015	DBD0016	DBD0017	DBD0018	DBD0019	DBD0020	DBD0021

ITEM	CD-220	CD-320	CD-420	CD-520	CD-620
Power Voltage(V)	AC 1~230±15%	AC 1~230±15%	AC 1~230±15%	AC 1~230±15%	AC 1~230±15%
Rated Working Capacity(W)	600	850	1100	1400	1700
Max Starting Current(A)	130	200	300	400	480
A Djustment Positions	4	4	4	4	4
Charge Voltage(V)	12/24	12/24	12/24	12/24	12/24
Rated Charging Current(A)	20	30	40	50	60
Max Ratedreference Capacity(ah)	300	450	600	750	900
Min Ratedreference Capacity(ah)	20	30	40	50	60
Measurement(mm)	335x340x675	335x340x675	335x340x675	335x340x675	335x340x675
Weight(kg)	14.5	16.5	19.5	23.5	26
Dabu Code(No.)	DBD0022	DBD0023	DBD0024	DBD0025	DBD0026



## Features

- Modern design and high performance.
- Simple operations and maintenance.
- Equipment with selector for normal or quick charge
- Compact, light and portable.
- Provide with completed kits, equipped with ammeter.



ITEM	CD-200	CD-300	CD-400	CD-500	CD-600
Power Voltage(V)	AC 1~230±15%	AC 1~230±15%	AC 1~230±15%	AC 1~230±15%	AC 1~230±15%
Rated Working Capacity(W)	600	850	1100	1400	1700
Max Starting Current(A)	130	200	300	400	480
A Djustment Positions	4	4	4	6	6
Charge Voltage(V)	12/24	12/24	12/24	12/24	12/24
Rated Charging Current(A)	20	30	40	50	60
Max Ratedreference Capacity(ah)	300	450	600	750	900
Min Ratedreference Capacity(ah)	20	30	40	50	60
Power Voltage(V)	230	230	230	230	230
Measurement(mm)	355x325x610	355x325x610	355x325x610	355x325x610	355x325x610
Weight(kg)	14.5	16.5	19.5	23.5	26
Dabu Code(No.)	DBD0027	DBD0028	DBD0029	DBD0030	DBD0031

## HANDLE (Size:LxWxH)



## MIG MOVING VAN



## PLASTIC BOX PACKING



## ELECTRODE HOLDER



## FLUX CORED WIRE



## MIG-MAG/ FLUX TORCH



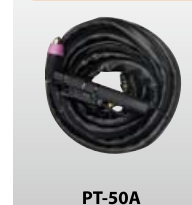
## SPOOL GUNS



## WELDING ELECTRODE



## PLASMA CUTTING TORCH



## TIG TORCH



## EARTH CLAMP





# AUTO DARKENING WELDING HELMET



## AUTO DARKENING WELDING HELMET

Dabu brand products are CE, DIN-PLUS, CSA, ANSI, AS/NZS, RoHS approved already under newest standard. Dabu is first Chinese manufacturer, DABU is the first Chinese manufacturer to gain the DIN-PLUS, which belongs to the highest level's approval of CE certificate with best optical testing result. to gain the DIN Plus, CE certificates with best possible optical test results. When DABU products are on the job you can be assured you are safe and protected.





## JAGUAR SUPERWELD SERIES

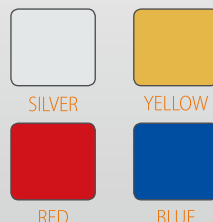
- Battery powered with solar-assist for long life(up to 5,000 hrs.) with changeable batteries required.
- Features auto-off circuitry at 15-20 min.And low battery indicator.
- Four independent arc sensors.
- Filter darkening reaction is 1/2,5000 sec.
- Ideal for MMA,MIG, TIG, PAC,PAW, CAC-A, OFW,OC .
- Variable shade 5-8.5/9-13.5,variable sensitivity and delay controls.
- Light weight, well-balanced and advanced desgin fully adjustable headgear.
- Includes replacement cover lenses.



**DROPS AS YOU LIKE**  
Drop-friction is adjusted on the wearers right hand side: Turn the right-hand knob clockwise to increase (or counterclockwise to decrease) the effort needed to nod down the shield.

### AUTOMATIC DIMMING SCREEN

Transparent light transmittance 0.1 milliseconds reliable light . Visual screen window visibility window can provide more than 180 degrees of vision.



### HELMET

Light quality, durable, dirty and frictional resistance



ADF DX-850E

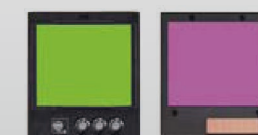


ADF DX-980E



## FREE SUPERWELD SERIES

- Battery powered with solar-assist for long life(up to 5,000 hrs.) with changeable batteries required.
- Features auto-off circuitry at 15-20 min.And low battery indicator.
- Four independent arc sensors.
- Filter darkening reaction is 1/2,5000 sec.
- Ideal for MMA,MIG, TIG, PAC,PAW, CAC-A, OFW,OC .
- Variable shade 9-13,variable sensitivity and delay controls.
- Light weight, well-balanced and advanced desgin fully adjustable headgear.
- Includes replacement cover lenses.

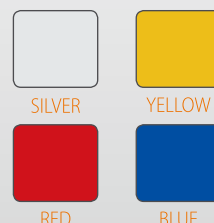


ADF DX-980N



## JEEP SUPERWELD SERIES

- Battery powered with solar-assist for long life(up to 5,000 hrs.) with changeable batteries required.
- Features auto-off circuitry at 15-20 min.And low battery indicator.
- Four independent arc sensors.
- Filter darkening reaction is 1/2,5000 sec.
- Ideal for MMA,MIG, TIG, PAC,PAW, CAC-A, OFW,OC .
- Variable shade 9-13,variable sensitivity and delay controls.
- Light weight, well-balanced and advanced desgin fully adjustable headgear.
- Includes replacement cover lenses.

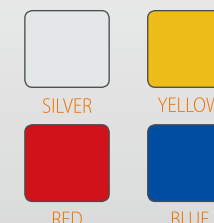


ADF DX-550E



## VISTA SUPERWELD SERIES

- Battery powered with solar-assist for long life(up to 5,000 hrs.) with changeable batteries required.
- Features auto-off circuitry at 15-20 min.And low battery indicator.
- Four independent arc sensors.
- Filter darkening reaction is 1/2,5000 sec.
- Ideal for MMA,MIG, TIG, PAC,PAW, CAC-A, OFW,OC .
- Variable shade 9-13,variable sensitivity and delay controls.
- Light weight, well-balanced and advanced desgin fully adjustable headgear.
- Includes replacement cover lenses.



ADF DX-950N





## EILET TOPWELD SERIES

- Battery powered with solar-assist for long life(up to 5,000 hrs.) with changeable batteries required.
- Features auto-off circuitry at 15-20 min.And low battery indicator.
- Two/ four independent arc sensors.
- Filter darkening reaction is 1/2,5000 sec.
- Ideal for MMA,MIG, TIG, PAC,PAW, CAC-A.
- Variable shade 5-8/9-13,variable sensitivity and delay controls.
- Light weight, well-balanced and advanced desgins fully adjustable headgear.
- Includes replacement cover lenses.



ADF DX-600G

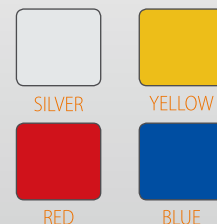


## ARTERY TOPWELD SERIES

- Battery Powered With Solar-assist For Long Life(up to 5,000 hrs.) With Changeable Batteries Required.
- Features Auto-off Circuitry at 15-20 min.and Low Battery Indicator.
- Two Independent Arc Sensors.
- Filter darkening Reaction is 1/2,5000 sec.
- Ideal for MMA,MIG, TIG, PAC,PAW, CAC-A, OFW,OC .
- Variable Shade 9-13,Variable Sensitivity and Delay Controls.
- Light weight Well-balanced Design Fully Adjustable Headgear Provides Comfort and Reduces Fatigue.
- Includes Replacement Cover Lenses.



ADF DX-600S



## THOR DIGITAL SERIES

- Battery powered with solar-assist for long life(up to 5,000 hrs.) features auto-off circuitry at 15-20 min.
- Two independent arc sensors.
- Lens darkening reaction is 1/1,5000 sec.
- Ideal for MIG and STICK Welding,TIG Rating.
- Variable shade 5-8/9-13,variable sensitivity and delay controls.
- Light weight well-balanced design fully adjustable headgear provides comfort and reduces fatigue.
- Includes replacement cover lenses.

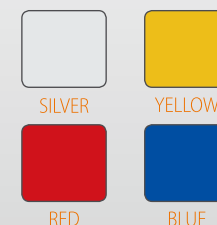


ADF DX-650E



## LEADER TECWELD SERIES

- Battery powered with solar-assist for long life(up to 5,000 hrs.) with changeable batteries required.
- Features auto-off circuitry at 15-20 min.And low battery indicator.
- Two independent arc sensors.
- Lens darkening reaction is 1/2,5000 sec.
- Ideal for MMA,MIG, TIG, PAC,PAW, CAC-A.
- Variable shade 9-13,variable sensitivity and delay controls.
- Light weight well-balanced design fully adjustable headgear provides comfort and reduces fatigue.
- Includes replacement cover lenses.



ADF DX-600S



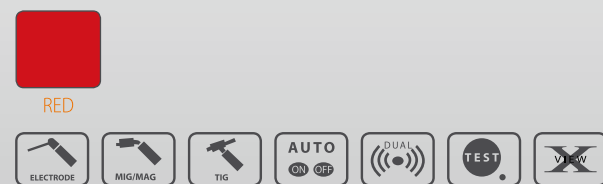


## SKULL TECWELD SERIES

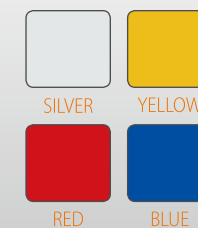
- Battery powered with solar-assist for long life(up to 5,000 hrs.) with changeable batteries required.
- Features auto-off circuitry at 15-20 min.And low battery indicator.
- Two independent arc sensors.
- Filter darkening reaction is 1/2,5000 sec.
- Ideal for MMA,MIG, TIG, PAC,PAW, CAC-A.
- Variable shade 9-13,variable sensitivity and delay controls.
- Light weight well-balanced design fully adjustable headgear provides comfort and reduces fatigue.
- Includes replacement cover lenses.



ADF DX-500S



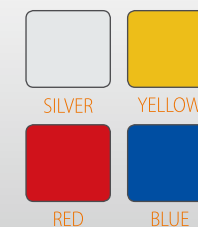
## MEGA TECWELD SERIES



ADF DX-500S



## VOGUE EASYWELD SERIES



ADF DX-300F



## HAPPY EASYWELD SERIES



ADF DX-402S



## SMART EASYWELD SERIES

- Battery powered with solar-assist for long life(up to 5,000 hrs.) features auto-off circuitry at 15-20 min.
- Two independent arc sensors.
- Lens darkening reaction is 1/1,5000 sec.
- Ideal for MMA,MIG, TIG, PAC,PAW, CAC-A.
- Variable shade 9-13,variable sensitivity and delay controls.
- Light weight well-balanced design fully adjustable headgear provides comfort and reduces fatigue.
- Includes replacement cover lenses.



ADF DX-500T



- Battery powered with solar-assist for long life(up to 5,000 hrs.) with changeable batteries required.
- Features auto-off circuitry at 15-20 min.And low battery indicator.
- Two independent arc sensors.
- Filter darkening reaction is 1/2,5000 sec.
- Ideal for MMA,MIG, TIG, PAC,PAW, CAC-A.
- Variable shade 9-13,variable sensitivity and delay controls.
- Light weight well-balanced design fully adjustable headgear provides comfort and reduces fatigue.
- Includes replacement cover lenses.

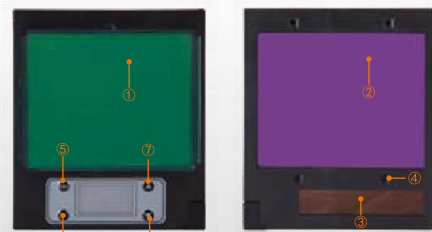


### AUTOMATIC DIMMING SCREEN

Double use of filter and black glass.  
Transparent light transmittance 0.1 milliseconds reliable light.  
Visual screen window visibility window can provide more than 180 degrees of vision.



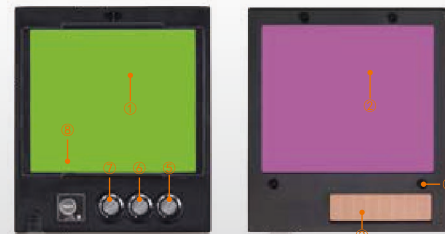
ADF DX-980E



Single-chip microcomputer control, LCD display

① LCD	⑤ Mode
② UV/IR Filter	⑥ Set
③ Solar cell	⑦ Up/Test
④ Sensor	⑧ Down

ADF DX-980N



① LCD	⑤ Sensitivity Control
② UV/IR Filter	⑥ Delay Control
③ Solar cell	⑦ Shade Control
④ Sensor	⑧ Self-test button

ADF DX-850E



Single-chip microcomputer control, LCD display

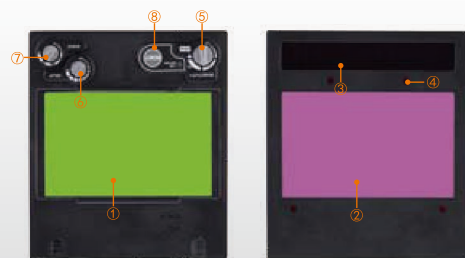
① LCD	⑤ Mode
② UV/IR Filter	⑥ Set
③ Solar cell	⑦ Up/Test
④ Sensor	⑧ Down

ADF DX-800S



① LCD	⑤ Lithium Batteries
② UV/IR Filter	⑥ Delay Control
③ Solar cell	⑦ Sensitivity Control
④ Sensor	⑧ Self-Test

ADF DX-900N



① LCD	⑤ Sensitivity Control
② UV/IR Filter	⑥ Delay Control
③ Solar cell	⑦ Shade Control
④ Sensor	⑧ Self-test button

ADF DX-950N



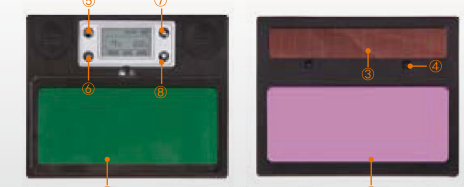
① LCD	⑤ Delay Control
② UV/IR Filter	⑥ Sensitivity Control
③ Solar cell	⑦ Shade Control
④ Sensor	⑧ Self-test button

ADF DX-800G



① LCD	⑤ Self-test button
② UV/IR Filter	⑥ Delay Control
③ Solar cell	⑦ Sensitivity Control
④ Sensor	⑧ Shade Control

ADF DX-650E



Single-chip microcomputer control, LCD display

① LCD	⑤ Mode
② UV/IR Filter	⑥ Set
③ Solar cell	⑦ Up/Test
④ Sensor	⑧ Down

Technical Data	ADF DX-980E	ADF DX-980N	ADF DX-950N	ADF DX-900N
Optical Class	1 / 1 / 1 / 2			
Viewing Area	98x80mm		98x62mm	100x50mm
Cartridge Size	133x14x10mm			
Arc Sensor	4			
Light State	DIN 4			
Dark State	Variable shade,5~8.5/9~13.5	Variable shade, 9 ~13		
Shade Control	Internal,Variable			
Power On/Off	Fully Automatic			
Sensitivity Control	Low - High, by infinitely dial knob			
UV/IR Protection	DIN16			
Power Supply	Solar cell. Battery change required 1xCR2450 lithium battery		Solar cell. Battery change required 2xCR2450 lithium battery	
Switching Time	1/25000S, from Light to Dark			
Dark to Light	0.1-2.0S by infinitely dial knob	0.1-1.0S by infinitely dial knob		
Low Amperage TIG	5amps(DC),5amps(AC),			
Grinding Function	YES			
Low Volume Alarm	YES			
ADF self-check	YES			
Operating Tep.	-5C~+55°C			
Storing Tep.	-20°C~+70°C			
Warranty	1 Year			
Weight	530g			
Packing Size	34x23x26cm			

Technical Data	ADF DX-850E	ADF DX-800S	ADF DX-800G	ADF DX-650E
Optical Class	1 / 1 / 1 / 2			1 / 2 / 1 / 2
Viewing Area	100×50mm			98×43mm
Cartridge Size	110×90×9mm			110×90×10mm
Arc Sensor	2			
Light State	DIN 4			
Dark State	Variable shade,5~8.5/9~13.5	Variable shade, 9 ~13	Variable shade, 5~8/9 ~13	
Shade Control	Internal,Variable	External, Variable		Internal,Variable
Power On/Off	Fully Automatic			
Sensitivity Control	Low-High,by Adjustment button	Low-High, by infinitely dial knob		Low-High,by Adjustment button
UV/IR Protection	DIN 16			
Power Supply	Solar cell. Battery change required 2×CR2032 lithium battery		Solar cell. Battery change required 1×CR2032 lithium battery	Solar cell. Battery change required 2×CR2032 lithium battery
Switching Time	1/25000S, from Light to Dark			
Dark to Light	0.1-2.0S by infinitely dial knob	0.1-1.0S by infinitely dial knob		
Low Amperage TIG	≥5amps(DC), ≥5amps(AC)			
Grinding Function	YES			
Low Volume Alarm	YES			
ADF self-check	YES			
Operating Tep.	-5°C~+55°C			
Storing Tep.	-20°C~+70°C			
Warranty	1 Year			
Weight	490g			530g
Packing Size	33×23×26cm			



ADF DX-600G



① LCD	⑤ Self-test button
② UV/IR Filter	⑥ Delay Control
③ Solar cell	⑦ Sensitivity Control
④ Sensor	⑧ Shade Control

ADF DX-600S



① LCD	⑤ Lithium Batteries
② UV/IR Filter	⑥ Delay Control
③ Solar cell	⑦ Sensitivity Control
④ Sensor	⑧ Self-Test

ADF DX-520S



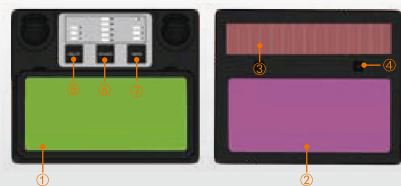
① LCD	
② UV/IR Filter	
③ Solar cell	
④ Sensor	

ADF DX-500S



① LCD	⑤ UV/IR filter
② Delay time control knob	⑥ Sensor
③ Sensitivity control knob	
④ Solar cell	

ADF DX-550E



Single-chip microcomputer control, LED display

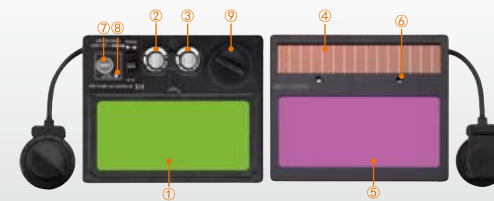
① LCD	⑤ Delay Control
② UV/IR Filter	⑥ Shade Control
③ Solar cell	⑦ Sensitivity Control
④ Sensor	

ADF DX-520G



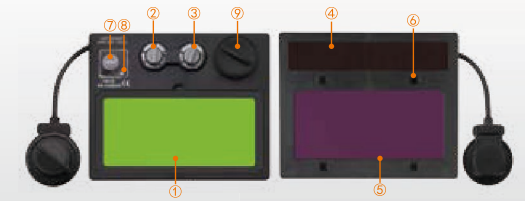
① LCD	⑤ Delay Control
② UV/IR Filter	⑥ Sensitivity Control
③ Solar cell	⑦ Shade Control
④ Sensor	

ADF DX-500G



① LCD	⑥ Sensor
② Delay time control knob	⑦ Self-test button
③ Sensitivity control knob	⑧ Low voltage indicator
④ Solar cell	⑨ Lithium batteries
⑤ UV/IR filter	

ADF DX-500T



① LCD	⑥ Sensor
② Delay time control knob	⑦ Self-test button
③ Sensitivity control knob	⑧ Low voltage indicator
④ Solar cell	⑨ Lithium batteries
⑤ UV/IR filter	

Technical Data	ADF DX-600G	ADF DX-600S	ADF DX-550E	ADF DX-520G
Optical Class	1 / 1 / 1 / 2		1 / 2 / 1 / 2	
Viewing Area	98×43mm		92×42mm	
Cartridge Size	110×90×9mm		110×90×9.8mm	110×90×9mm
Arc Sensor	2			4
Light State	DIN 4			
Dark State	Variable shade, 5~8/9 ~13	Variable shade, 9 ~13		Variable shade, 5~8/9 ~13
Shade Control	External,Variable		Internal,Variable	External,Variable
Power On/Off	Fully Automatic			
Sensitivity Control	Low-High, by infinitely dial knob		Unadjustable,Auto	Low-High, by infinitely dial knob
UV/IR Protection	DIN16			
Power Supply	Solar cell. Battery change required 1×CR2032 lithium battery	Solar cell. Battery change required 2×CR2032 lithium battery		Solar cell. Re-chargeable Battery no battery change required
Switching Time	1/25000S, from Light to Dark		1/15000S,from Light to Dark	
Delay Control	0.1-1.0S by infinitely dial knob		0.1~1.0S by Adjustment button	0.1-1.0S by infinitely dial knob
Low Amperage TIG	≥5amps(DC),≥5amps(AC),		20Amps	≥10amps(DC),≥10amps(AC).
Grinding Function	YES		NO	YES
Low Volume Alarm	YES		NO	
ADF self-check	YES		NO	
Operating Tep.	-5℃~+55℃			
Storing Tep.	-20℃~+70℃			
Warranty	1 Year			
Weight	490g	500g	530g	490g
Packing Size	33×23×26cm			

Technical Data	ADF DX-520S	ADF DX-500S	ADF DX-500G	ADF DX-500T
Optical Class	1 / 2 / 1 / 2			
Viewing Area	92×42mm			
Cartridge Size	110×90×9mm			
Arc Sensor	4	2		4
Light State	DIN 4			
Dark State	Variable shade, 9 ~13		Variable shade, 5~8 / 9~13	Variable shade, 9 ~13
Shade Control	External,Variable			
Power On/Off	Fully Automatic			
Sensitivity Control	Unadjustable,Auto	Low-High, by infinitely dial knob		
UV/IR Protection	DIN 16			
Power Supply	Solar cell. Re-chargeable Battery no battery change required		Solar cell. Battery change required 1×CR2032 lithium battery	
Switching Time	1/15000S,from Light to Dark		1/25000S, from Light to Dark	
Dark to Light	0.1-1.0S by infinitely dial knob			
Low Amperage TIG	≥10amps(DC),≥10amps(AC),			
Grinding Function	YES			
Low Volume Alarm	NO		YES	
ADF self-check	NO		YES	
Operating Tep.	-5°C~+55°C			
Storing Tep.	-20°C~+70°C			
Warranty	1 Year			
Weight	460g	490g		
Packing Size	33×23×23cm			



ADF DX-450D



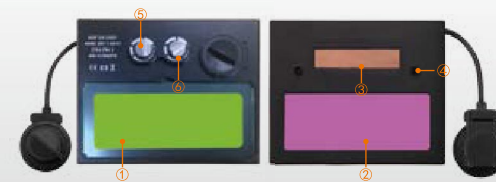
① LCD	⑤ Delay time control knob
② UV/IR Filter	⑥ Sensitivity control knob
③ Solar cell	
④ Sensor	

ADF DX-402S



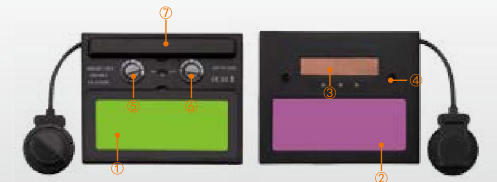
① LCD	
② UV/IR Filter	
③ Solar cell	
④ Sensor	

ADF DX-350D



① LCD	⑤ Sensitivity control knob
② UV/IR Filter	⑥ Delay time control
③ Solar cell	
④ Sensor	

ADF DX-350K



① LCD	⑤ Sensitivity control knob
② UV/IR Filter	⑥ Delay time control
③ Solar cell	⑦ LED lighting switch
④ Sensor	

ADF DX-400N



① LCD	⑤ Shade Control
② UV/IR Filter	⑥ Sensitivity Control
③ Solar cell	⑦ Delay Control
④ Sensor	

ADF DX-400S



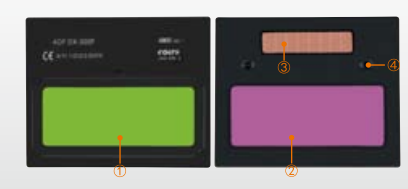
① LCD	⑤ Sensitivity Control
② UV/IR Filter	⑥ Delay Control
③ Solar cell	
④ Sensor	

ADF DX-300S



① LCD	
② UV/IR Filter	
③ Solar cell	
④ Sensor	

ADF DX-300F



① LCD	
② UV/IR Filter	
③ Solar cell	
④ Sensor	

Technical Data	ADF DX-450D	ADF DX-402S	ADF DX-400N	ADF DX-400S
Optical Class	1 / 2 / 2 / 2		1 / 2 / 1 / 2	
Viewing Area		92×42mm		
Cartridge Size		110×90×9mm		
Arc Sensor		2		
Light State		DIN 4		
Dark State		Variable shade, 9~13		
Shade Control	External, Variable		Internal, Variable	External, Variable
Power On/Off		Fully Automatic		
Sensitivity Control	Low-High, by infinitely dial knob	Unadjustable, Auto	Low-High, by switch button	
UV/IR Protection		DIN16		
Power Supply	Solar cell. Battery change required 2×AAA Alkaline batteries		Solar cell. Re-chargeable Battery no battery change required	
Switching Time		1/15000S, from Light to Dark		
Dark to Light	0.1-1.0S by infinitely dial knob	0.25~0.45S Auto	0.25~0.3S at fast position, 0.35~0.6S at middle position, 0.65~0.85S at slow position	
Low Amperage TIG	≥10amps(DC)	≥35amps(DC), ≥35amps(AC),	≥20amps(DC)	
Grinding Function	YES		NO	YES
Low Volume Alarm		NO		
ADF self-check		NO		
Operating Tep.		-5°C~+55°C		
Storing Tep.		-20°C~+70°C		
Warranty		1 Year		
Weight		460g		
Packing Size		33×23×23cm		

Technical Data	ADF DX-350D	ADF DX-350K	ADF DX-300S	ADF DX-300F
Optical Class	1 / 1 / 1 / 2	1 / 2 / 1 / 2		1 / 1 / 1 / 2
Viewing Area		90×35mm		
Cartridge Size		110×90×9mm		
Arc Sensor		2		
Light State		DIN 4		
Dark State		Variable shade, 9~13		Fixed shade 10(11)
Shade Control		External, Variable		—
Power On/Off		Fully Automatic		
Sensitivity Control		Low-High, by infinitely dial knob		Unadjustable, Auto
UV/IR Protection		DIN16		
Power Supply	Solar cell. Battery change required 1×CR2032 lithium battery	Solar cell. Battery change required 2×AAA Alkaline batteries		Solar cells. Re-chargeable battery No battery change required
Switching Time		1/15000S, from Light to Dark		1/5000S, from Light to Dark
Dark to Light		0.1-1.0S by infinitely dial knob		0.25-0.45S Auto
Low Amperage TIG		≥20amps(DC), ≥20amps(AC)		≥35amps(DC), ≥35amps(AC)
Grinding Function	YES			NO
Low Volume Alarm		NO		
ADF self-check		NO		
Operating Tep.		-5°C~+55°C		
Storing Tep.		-20°C~+70°C		
Warranty		1 Year		
Weight	480g	500g		480g
Packing Size	33×23×23cm	33×23×26cm		33×23×23cm



## EASY WELD VOGUE



## EASY WELD HAPPY



## EASY WELD JEEP



## TEC WELD MEGA



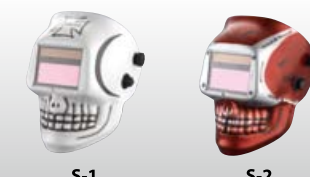
## TEC WELD BATMAM



## TEC WELD LEADER



## TEC WELD SKULL



## TOP WELD EILET



## TEC WELD ARTERY







**SUPER WELD JAGUAR**



Welding Method		MMA Welding	TIG AC&DC	TIG-PULSE AC&DC	MIG/MAG CO <sub>2</sub>	MIG/MAG PULS	Plasma ARC Welding PAC	Plasma ARC Welding PAC	Air Carbon ARC cutting	Oxyfuel Gas Welding OFW	Oxyfuel Cutting OC	Laser Welding	Grinding Function	Low Battery Led	Replaceable battery	ADF Self-checking	Matchable headgear
ATMANSVA	Mode NO.	DX-200F	✓	✓	✓	✓	×	×	✓	×	×	×	×	×	×	×	THOR SMART LEADER ARTERY BATMAN MEGA SKULL HAPPY VOGUE JEEP JAGUAR
	DX-300F	✓	✓	✓	✓	✓	×	×	✓	×	×	×	×	×	×	×	
	DX-350D	✓	✓	✓	✓	✓	✓	✓	✓	×	×	×	×	×	✓	×	
	DX-350K	✓	✓	✓	✓	✓	✓	✓	✓	×	×	×	×	×	✓	×	
ATMICAL	DX-400S	✓	✓	✓	✓	✓	✓	✓	✓	×	×	×	✓	×	×	×	THOR SMART LEADER ARTERY BATMAN MEGA SKULL HAPPY VOGUE JEEP JAGUAR
	DX-402S	✓	✓	✓	✓	✓	✓	✓	✓	×	×	×	✓	×	×	×	
	DX-400N	✓	✓	✓	✓	✓	✓	✓	✓	×	×	×	×	×	×	×	
	DX-450D	✓	✓	✓	✓	✓	✓	✓	✓	×	×	×	✓	×	✓	×	
ATMADOL	DX-520S	✓	✓	✓	✓	✓	✓	✓	✓	×	×	×	✓	×	×	×	EILET
	DX-520G	✓	✓	✓	✓	✓	✓	✓	✓	×	×	×	✓	✓	✓	×	
	DX-500T	✓	✓	✓	✓	✓	✓	✓	✓	×	×	×	✓	✓	✓	✓	
	DX-500G	✓	✓	✓	✓	✓	✓	✓	✓	×	×	×	✓	✓	✓	✓	
ATMADOL	DX-550E	✓	✓	✓	✓	✓	✓	✓	✓	×	×	×	×	×	✓	×	THOR SMART LEADER ARTERY BATMAN MEGA SKULL HAPPY VOGUE JEEP JAGUAR
	DX-600S	✓	✓	✓	✓	✓	✓	✓	✓	×	×	×	✓	✓	✓	✓	
	DX-700S	✓	✓	✓	✓	✓	✓	✓	✓	×	×	×	✓	✓	✓	✓	
	DX-800S	✓	✓	✓	✓	✓	✓	✓	✓	✓	✓	×	✓	✓	✓	✓	
ATMADOL	DX-650E	✓	✓	✓	✓	✓	✓	✓	✓	×	×	×	✓	✓	✓	✓	EILET
	DX-600G	✓	✓	✓	✓	✓	✓	✓	✓	×	×	×	✓	✓	✓	✓	
	DX-800G	✓	✓	✓	✓	✓	✓	✓	✓	✓	✓	×	✓	✓	✓	✓	
	DX-850E	✓	✓	✓	✓	✓	✓	✓	✓	✓	✓	✓	✓	✓	✓	✓	
	DX-900N	✓	✓	✓	✓	✓	✓	✓	✓	✓	✓	✓	✓	✓	✓	✓	FREE VISTA JAGUAR
	DX-950N	✓	✓	✓	✓	✓	✓	✓	✓	✓	✓	✓	✓	✓	✓	✓	
	DX-980N	✓	✓	✓	✓	✓	✓	✓	✓	✓	✓	✓	✓	✓	✓	✓	
	DX-980E	✓	✓	✓	✓	✓	✓	✓	✓	✓	✓	✓	✓	✓	✓	✓	





WG-200F



WH-200F



WH-100G



VOGUE-200G

Specification/Model	WG-200F	WH-200F
Optical Class	1 / 2 / 2 / 3	1 / 2 / 2 / 3
Viewing Area	90x35 mm	
Cartridge Size	108x50.8x5 mm	
Arc Sensor	2	
LightState	DIN 3	
DarkState	Fixed shade 10 (11)	
Shade Control	—	
Power On/Off	Fully Automatic	
Sensitivity Control	—	
UV/IR Protection	Up To Shade DIN16 at all times	
Power Supply	Solar cell. Re-chargeable battery No battery change required	
Switching Time	1/5,000 s. from Light to Dark	
Dark to Light	0.25 ~ 0.45s	
Low Amperage TIG Rated	≥ 35 amps / DC; ≥ 35 amps / AC	
Operating Temp.	-5°C ~ +55°C (23°F ~ 131°F)	
Storing Temp.	-20°C ~ +70°C (-4°F ~ 158°F)	
Weight	150g	350g
Packing Size	20x10x9cm	33x23x23cm
Approved		

The headset welding protective masks, one-piece design, easy to use, high quality PP material, shockproof, and drop size, light weight; high temperature resistant, flame proof, anti-stick welding slag, and anti-ultraviolet and infrared. Headband size can be adjusted, and comfortable to wear.

Viewing size: 108x50.8mm  
UV/IR Protection: DIN16  
Glass size: 108x50.8x3mm  
Shade: 10(11,12,13) welding glass  
Weight: 350g  
Package Size: 33x23x23cm

The headset welding protective masks, one-piece design, easy to use, high quality PP material, shockproof, and drop size, light weight; high temperature resistant, flame proof, anti-stick welding slag, and anti-ultraviolet and infrared. Headband size can be adjusted, and comfortable to wear.

Viewing size: 110x90mm  
UV/IR Protection: DIN16  
Glass size: 110x90x3mm  
Shade: 10(11,12,13) welding glass  
Weight: 370g  
Package Size: 33x23x26cm



WM-100G

The headset welding protective masks, one-piece design, easy to use, high quality PP material, shockproof, and drop size, light weight; high temperature resistant, flame proof, anti-stick welding slag, and anti-ultraviolet and infrared. Headband size can be adjusted and comfortable to wear.

Viewing size: 108x50.8mm  
Glass size: 108x50.8x3mm  
Shade: 10(11,12,13) welding glass  
Weight: 350g  
Package Size: 33x23x24cm



WM-200G

The headset welding protective masks, one-piece design, easy to use, high quality PP material, shockproof, and drop size, light weight; high temperature resistant, flame proof, anti-stick welding slag, and anti-ultraviolet and infrared. Headband size can be adjusted, and comfortable to wear.

Viewing size: 110x90mm  
Glass Size: 110x90x3mm  
Shade: 10(11,12,13) welding glass  
Weight: 370g  
Package Size: 33x23x24cm



WG-100G

Clamshell design can be easily observed; flexible PVC lens body, double filter lenses, scratch resistant; the inner lens is transparent, the outer lens uses black inorganic glass, impact resistant, prevent welding slag splashing, UV; indirect ventilation design, comfortable to wear; rubber elastic woven headband; applies to gas welding, brazing, soldering and flame cutting, strong incident light

Lens darkness: 5#, adjustable  
Weight: 150g  
Package Size: 20x10x9cm



WG-102G

Clamshell design can be easily observed; flexible PVC lens body, double filter lenses, scratch resistant; the inner lens is transparent, the outer lens uses black inorganic glass, impact resistant, prevent welding slag splashing, UV; indirect ventilation design, comfortable to wear; rubber elastic woven headband; applies to gas welding, brazing, soldering and flame cutting, strong incident light

Lens darkness: 5#, adjustable  
Weight: 115g  
Package Size: 20x10x9cm



HW-100G

Hand-held welding mask, the use of high quality PP material, shockproof, and drop, light weight; high temperature resistant, flame proof, anti-stick welding slag, and anti-ultraviolet and infrared.

Viewing size: 108x50.8mm  
Glass size: 108x50.8x3mm  
Shade: 10(11,12,13) welding glass  
Weight: 330g  
Package Size: 43x26x10cm



HW-200G

Hand-held welding mask, the use of high quality PP material, shockproof, and drop, light weight; high temperature resistant, flame proof, anti-stick welding slag, and anti-ultraviolet and infrared.

Viewing size: 110x90mm  
Glass Size: 110x90x3mm  
Shade: 10(11,12,13) welding glass  
Weight: 360g  
Package Size: 43x26x10cm

## Cover Lens In Color Box/ Skin Packing



## Helmet Color Box



## Double Blister



## Sweatband



## Front cover lens



Packag 01



Packag 02

## Inside cover lens



Packag 03



Packag 04

## Filter in skin pack



## Cap



## Welding glove



## Welding mask bag



## Welding apron



## Headgear-1



## Headgear-2



## Headgear-3





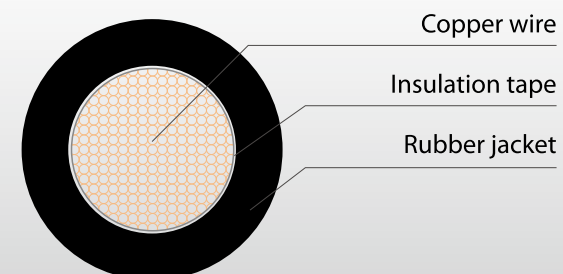


FACTORY LOCATION 2

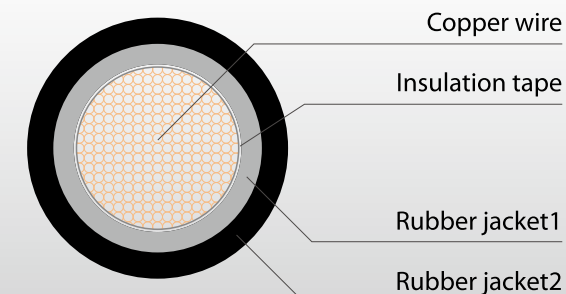
## RUBBER WELDING CABLES



DABU has the most advanced and efficient modern assembly line, high-tech inspection equipments, so on.



Single-deck rubber jacket welding cable



Double-deck rubber jacket welding cable

### VDE Model:H01N2-D Standards:EN50525-2-81

No.of conductor	Nominal area (mm <sup>2</sup> )	Nominal thickness of sheath(mm)	Average of OD(mm)	
			Min	Max
1	10	2.0	7.7	9.7
	16	2.0	8.8	11.0
	25	2.0	10.1	12.7
	35	2.0	11.4	14.2
	50	2.2	13.2	16.5
	70	2.4	15.3	19.2
	95	2.6	17.1	21.4

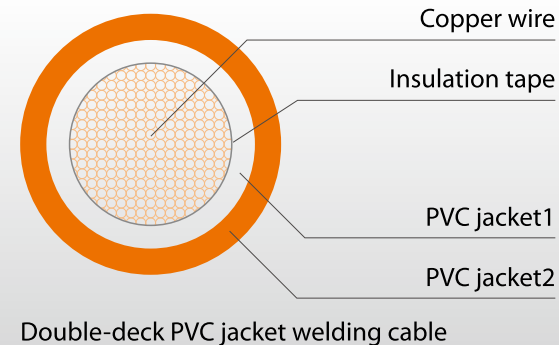


PVC  
WELDING CABLES



STRUCTURE SKETCH MAP

Available PVC Jacket Colour:  
Black, Blue, Red, Orange, White



No.of conductor	Nominal area (mm <sup>2</sup> )	Nominal thickness of sheath(mm)	Average of OD(mm)	
			Min	Max
1	10	2.0	7.7	9.7
	16	2.0	8.8	11.0
	25	2.0	10.1	12.7
	35	2.0	11.4	14.2
	50	2.2	13.2	16.5
	70	2.4	15.3	19.2
	95	2.6	17.1	21.4
	120	2.8	19.0	24.0



VDE Model: H05RR-F Standards: EN50525-2-21  
SAA Model: 60245IEC53 Standards: AS/NZS60245.4  
CCC Model: 60245IEC53 60245IEC57 Standards: GB/T5013.4  
KC Model: 60245IEC57 Standards: KC60245-4

No.of conductor	Nominal area (mm <sup>2</sup> )	Nominal thickness of insulation(mm)	Nominal thickness of sheath(mm)	Average of OD(mm)	
				Min	Max
2	0.75	0.6	0.8	5.7	7.4
	1.0	0.6	0.9	6.1	8.0
	1.5	0.8	1.0	7.6	9.8
	2.5	0.9	1.1	9.0	11.6
3	0.75	0.6	0.9	6.2	8.1
	1.0	0.6	0.9	6.5	8.5
	1.5	0.8	0.9	8.0	10.4
	2.5	0.9	1.1	9.6	12.4
	4	1.0	1.2	11.3	14.5
4	6	1.0	1.4	12.8	16.3
	0.75	0.6	0.9	6.8	8.8
	1.0	0.6	0.9	7.1	9.3
	1.5	0.8	1.1	9.0	11.6
	2.5	0.9	1.2	10.7	13.8
	4	1.0	1.3	12.7	16.2
5	6	1.0	1.5	14.2	18.1
	0.75	0.6	1.0	7.6	9.9
	1.0	0.6	1.0	8.0	10.3
	1.5	0.8	1.1	9.8	12.7
	2.5	0.9	1.3	11.9	15.3



VDE Model:H05RN-F Standards:EN50525-2-21

No.of conductor	Nominal area (mm <sup>2</sup> )	Nominal thickness of insulation(mm)	Nominal thickness of sheath(mm)	Average of OD(mm)	
				Min	Max
2	0.75	0.6	0.8	5.7	7.4
	1.0	0.6	0.9	6.1	8.0
3	0.75	0.6	0.9	6.2	8.1
	1.0	0.6	0.9	6.5	8.5
4	0.75	0.6	0.9	6.8	8.8
	1.0	0.6	0.9	7.1	9.3





SAA Model: 60245IEC66 Standards: AS/NZS60245.4  
CCC Model: 60245IEC66(YCW) Standards: GB/T5013.4  
VDE Model: H07RN-F Standards: EN50525-2-21  
KC Model: 60245IEC66 Standards: KC60245-4

No.of conductor	Nominal area (mm <sup>2</sup> )	Nominal thickness of insulation(mm)	Nominal thickness of sheath(mm)	Average of OD(mm)	
				Min	Max
2	1.0	0.8	1.3	7.7	10.0
	1.5	0.8	1.5	8.5	11.0
	2.5	0.9	1.7	10.2	13.1
	4	1.0	1.8	11.8	15.1
	6	1.0	2.0	13.1	16.8
3	1.0	0.8	1.4	8.3	10.7
	1.5	0.8	1.6	9.2	11.9
	2.5	0.9	1.8	10.9	14.0
	4	1.0	1.9	12.7	16.2
	6	1.0	2.1	14.1	18.0
4	1.0	0.8	1.5	9.2	11.9
	1.5	0.8	1.7	10.2	13.1
	2.5	0.9	1.9	12.1	15.5
	4	1.0	2.0	14.0	17.9
	6	1.0	2.3	15.7	20.0
5	1.0	0.8	1.6	10.2	13.1
	1.5	0.8	1.8	11.2	14.4
	2.5	0.9	2.0	13.3	17.0
	4	1.0	2.2	15.6	19.9
	6	1.0	2.5	17.5	22.2



VDE Model: H07RN8-F Standards: EN50525-2-21

No.of conductor	Nominal area (mm <sup>2</sup> )	Nominal thickness of insulation(mm)	Nominal thickness of sheath(mm)	Average of OD(mm)	
				Min	Max
2	1.0	0.8	1.3	7.7	10.0
	1.5	0.8	1.5	8.5	11.0
	2.5	0.9	1.7	10.2	13.1
	4	1.0	1.8	11.8	15.1
	6	1.0	2.0	13.1	16.8
3	1.0	0.8	1.4	8.3	10.7
	1.5	0.8	1.6	9.2	11.9
	2.5	0.9	1.8	10.9	14.0
	4	1.0	1.9	12.7	16.2
	6	1.0	2.1	14.1	18.0
4	1.0	0.8	1.5	9.2	11.9
	1.5	0.8	1.7	10.2	13.1
	2.5	0.9	1.9	12.1	15.5
	4	1.0	2.0	14.0	17.9
	6	1.0	2.3	15.7	20.0
5	1.0	0.8	1.6	10.2	13.1
	1.5	0.8	1.8	11.2	14.4
	2.5	0.9	2.0	13.3	17.0
	4	1.0	2.2	15.6	19.9
	6	1.0	2.5	17.5	22.2



VDE Model: A05RN8-F Standards: EN50525-2-21

No.of conductor	Nominal area (mm <sup>2</sup> )	Nominal thickness of insulation(mm)	Nominal thickness of sheath(mm)	Average of OD(mm)	
				Min	Max
2	0.75	0.6	0.8	5.7	7.4
	1.0	0.6	0.9	6.1	8.0
3	0.75	0.6	0.9	6.2	8.1
	1.0	0.6	0.9	6.5	8.5
4	0.75	0.6	0.9	6.8	8.8
	1.0	0.6	0.9	7.1	9.3



VDE Model: H03VVH2-F Standards: EN50525-2-11

No.of conductor	Nominal area (mm <sup>2</sup> )	Nominal thickness of insulation(mm)	Nominal thickness of sheath(mm)	Average of OD(mm)	
				Min	Max
2	0.5	0.5	0.6	3.0x4.9	3.7x5.9
	0.75	0.5	0.6	3.2x5.2	3.8x6.3





**VDE Model: H03VV-F Standards: EN50525-2-11**

No.of conductor	Nominal area (mm <sup>2</sup> )	Nominal thickness of insulation(mm)	Nominal thickness of sheath(mm)	Average of OD(mm)	
				Min	Max
2	0.5	0.5	0.6	4.6	5.9
	0.75	0.5	0.6	4.9	6.3
3	0.5	0.5	0.6	4.9	6.3
	0.75	0.5	0.6	5.2	6.7
4	0.5	0.5	0.6	5.4	6.9
	0.75	0.5	0.6	5.7	7.3



**CCC Model: YZ YZW Standards: JB/T8735.2**

No.of conductor	Nominal area (mm <sup>2</sup> )	Nominal thickness of insulation(mm)	Nominal thickness of sheath(mm)	Average of OD(mm)	
				Min	Max
2	4	1.0	1.2	10.6	13.7
	6	1.0	1.3	11.8	15.1
3	4	1.0	1.2	11.3	14.5
	6	1.0	1.3	12.6	16.1
4	4	1.0	1.3	12.7	16.2
	6	1.0	1.4	14.0	17.9
	1.5/1.0	0.8/0.6	1.1	8.6	11.2
	2.5/1.5	0.9/0.8	1.2	10.4	13.3
	4/2.5	1.0/0.9	1.3	12.3	15.7
	6/4	1.0/1.0	1.4	13.7	17.5
6	0.75	0.6	1.0	8.2	10.7
	1.0	0.6	1.1	8.7	11.5
	1.5	0.8	1.2	10.9	14.0
	2.5	0.9	1.4	13.2	16.9
	4	1.0	1.5	15.5	19.8
	6	1.0	1.7	17.4	22.1



**VDE Model: H05VVH2-F Standards: EN50525-2-11**

No.of conductor	Nominal area (mm <sup>2</sup> )	Nominal thickness of insulation(mm)	Nominal thickness of sheath(mm)	Average of OD(mm)	
				Min	Max
2	0.75	0.6	0.8	3.7x6.0	4.5x7.2
	1.0	0.6	0.8	3.9x6.2	4.7x7.5



**SAA Model: 60227IEC53 Standards: AS/NZS60227.5**  
**CCC Model: 60227IEC53(RVV) Standards: GB/T5023.5**  
**CCC Model: 60227IEC57(RVV-90) Standards: GB/T5023.5**  
**VDE Model: H05VV-F Standards: EN50525-2-11**  
**KC Model: 60227IEC53 Standards: C60227-5**

No.of conductor	Nominal area (mm <sup>2</sup> )	Nominal thickness of insulation(mm)	Nominal thickness of sheath(mm)	Average of OD(mm)	
				Min	Max
2	0.75	0.6	0.8	5.7	7.2
	1.0	0.6	0.8	5.9	7.5
	1.5	0.7	0.8	6.8	8.6
	2.5	0.8	1.0	8.4	10.6
3	0.75	0.6	0.8	6.0	7.6
	1.0	0.6	0.8	6.3	8.0
	1.5	0.7	0.9	7.4	9.4
	2.5	0.8	1.1	9.2	11.4
4	0.75	0.6	0.8	6.6	8.3
	1.0	0.6	0.9	7.1	9.0
	1.5	0.7	1.0	8.4	10.5
	2.5	0.8	1.1	10.1	12.5
5	0.75	0.6	0.9	7.4	9.3
	1.0	0.6	0.9	7.8	9.8
	1.5	0.7	1.1	9.3	11.6
	2.5	0.8	1.2	11.2	13.9



**SAA Model:60227IEC52 Standards:AS/NZS60227.5**  
**CCC Model: 60227IEC56(RVV-90) Standards: GB/T5023.5**  
**CCC Model: 60227IEC52(RVV) Standards: GB/T5023.5**  
**KC Model: 60227IEC52 Standards: KC60227-5**

No.of conductor	Nominal area (mm <sup>2</sup> )	Nominal thickness of insulation(mm)	Nominal thickness of sheath(mm)	Average of OD(mm)	
				Min	Max
2	0.5	0.5	0.6	4.6/ 3.0x4.9	5.9/ 3.7x5.9
	0.75	0.5	0.6	4.9/ 3.2x5.2	6.3/ 3.8x6.3
3	0.5	0.5	0.6	4.9	6.3
	0.75	0.5	0.6	5.2	6.7



**CCC Model: 60227IEC08(RV-90) Standards: GB/T5023.5**  
**VDE Model: H07V-U Standards: EN5025-2-31**  
**VDE Model: H07V-R Standards: EN5025-2-31**

No.of conductor	Nominal area (mm <sup>2</sup> )	Nominal thickness of insulation(mm)	Nominal thickness of sheath(mm)	Average of OD(mm)	
				Min	Max
1	1.5	0.7	/	2.7	3.2
	2.5	0.8	/	3.3	3.9
	4	0.8	/	3.8	4.4
	6	0.8	/	4.3	5.0
	10	1.0	/	5.6	6.4
	16	1.0	/	6.4	7.8
	25	1.2	/	8.1	9.7
	35	1.2	/	9.0	10.9
50	50	1.4	/	10.6	12.8





**H07V-K Standards: EN5025-2-31**  
**CCC Model: 60227IEC02(RV) Standards: GB/T5023.3**

No.of conductor	Nominal area (mm <sup>2</sup> )	Nominal thickness of insulation(mm)	Nominal thickness of sheath(mm)	Average of OD(mm)	
				Min	Max
1	1.5	0.7	/	2.8	3.4
	2.5	0.8	/	3.4	4.1
	4	0.8	/	3.9	4.8
	6	0.8	/	4.4	5.3



**H05V-K Standards: EN5025-2-31**  
**H05V-U Standards: EN5025-2-31**  
**CCC Model: 60227IEC06(RV) Standards: GB/T5023.3**

No.of conductor	Nominal area (mm <sup>2</sup> )	Nominal thickness of insulation(mm)	Nominal thickness of sheath(mm)	Average of OD(mm)	
				Min	Max
1	0.5	0.6	/	2.1	2.5
	0.75	0.6	/	2.2	2.7
	1.0	0.6	/	2.4	2.8



**CCC Model: 60227IEC08(RV-90) Standards: GB/T5023.3**

No.of conductor	Nominal area (mm <sup>2</sup> )	Nominal thickness of insulation(mm)	Nominal thickness of sheath(mm)	Average of OD(mm)	
				Min	Max
1	0.5	0.6	/	2.1	2.5
	0.75	0.6	/	2.2	2.7
	1.0	0.6	/	2.4	2.8
	1.5	0.7	/	2.8	3.4
	2.5	0.8	/	3.4	4.1



**CCC Model:BVR Standards:JB/T8734.2**

No.of conductor	Nominal area (mm <sup>2</sup> )	Nominal thickness of insulation(mm)	Nominal thickness of sheath(mm)	Average of OD(mm)	
				Min	Max
1	2.5	0.8	/	/	4.1
	4	0.8	/	/	4.8
	6	0.8	/	/	5.3
	10	1.0	/	/	7.3
	16	1.0	/	/	8.6
	25	1.2	/	/	10.2
	35	1.2	/	/	11.7
	50	1.4	/	/	13.9



**CCC Model:AVVR Standards:JB/T8734.4**

No.of conductor	Nominal area (mm <sup>2</sup> )	Nominal thickness of insulation(mm)	Nominal thickness of sheath(mm)	Average of OD(mm)	
				Min	Max
2	0.12	0.4	0.6	3.3/ 2.4x3.6	4.3/ 2.8x4.3
	0.2	0.4	0.6	3.6/ 2.5x3.9	4.7/ 3.0x4.7
	0.3	0.5	0.6	4.1/ 2.8x4.4	5.3/ 3.4x5.3
	0.4	0.5	0.6	4.4/ 2.9x4.7	5.7/ 3.5x5.7
3	0.12	0.4	0.6	3.4	4.5
	0.2	0.4	0.6	3.8	4.9
	0.3	0.5	0.6	4.4	5.7
	0.4	0.5	0.6	4.7	6.0
4	0.12	0.4	0.6	3.8	4.9
	0.2	0.4	0.6	4.2	5.4
	0.3	0.5	0.6	4.8	6.2
	0.4	0.5	0.6	5.1	6.6
5	0.12	0.4	0.6	4.1	5.3
	0.2	0.4	0.6	4.5	5.8
	0.3	0.5	0.6	5.3	6.7
	0.4	0.5	0.6	5.6	7.2
6~7	0.12	0.4	0.6	4.4	5.7
	0.2	0.4	0.6	4.9	6.3
	0.3	0.5	0.6	5.7	7.3
	0.4	0.5	0.6	6.2	7.8
10	0.12	0.4	0.6	5.7	7.2
	0.2	0.4	0.6	6.3	8.0
	0.3	0.5	0.8	7.8	9.7
	0.4	0.5	0.8	8.3	10.4
12	0.12	0.4	0.6	5.8	7.4
	0.2	0.4	0.6	6.5	8.2
	0.3	0.5	0.8	8.0	10.1
	0.4	0.5	0.8	8.6	10.8



**ETL C(ETL) Model: SVT SVTO SVTOO Standards: UL62**  
**UL C(UL) Model: SVT Standards: UL62**

No.of conductor	Nominal area (mm <sup>2</sup> )	Nominal thickness of insulation(mm)	Nominal thickness of sheath(mm)	Average of OD(mm)	
				Min	Max
2	18(0.824)	0.38	0.76	5.59	6.48
	17(1.04)	0.38	0.76	5.97	6.86
	16(1.31)	0.38	0.76	6.22	7.11
3	18(0.824)	0.38	0.76	5.84	6.73
	17(1.04)	0.38	0.76	6.35	7.24
	16(1.31)	0.38	0.76	6.60	7.49





ETL C(ETL) Model: SJT SJTO SJTW SJTOW SJTOOW SJTOO Standards: UL62  
UL C(UL) Model: SJT SJTW Standards: UL62

No.of conductor	Nominal area (mm <sup>2</sup> )	Nominal thickness of insulation(mm)	Nominal thickness of sheath(mm)	Average of OD(mm)	
				Min	Max
2	18(0.824)	0.76	0.76	7.11	8.00
	17(1.04)	0.76	0.76	7.37	8.26
	16(1.31)	0.76	0.76	7.75	8.64
	15(1.65)	0.76	0.76	8.00	8.89
	14(2.08)	0.76	0.76	8.51	9.53
	12(3.31)	0.76	1.14	10.3	11.6
	10(5.26)	1.14	1.52	13.7	15.4
3	18(0.824)	0.76	0.76	7.62	8.51
	17(1.04)	0.76	0.76	7.87	8.76
	16(1.31)	0.76	0.76	8.26	9.14
	15(1.65)	0.76	0.76	8.51	9.52
	14(2.08)	0.76	0.76	9.14	10.0
	12(3.31)	0.76	1.14	10.8	12.1
	10(5.26)	1.14	1.52	14.4	16.1
4	18(0.824)	0.76	0.76	8.26	9.27
	17(1.04)	0.76	0.76	8.64	9.65
	16(1.31)	0.76	0.76	8.89	10.0
	15(1.65)	0.76	0.76	9.40	10.54
	14(2.08)	0.76	0.76	9.91	11.0
	12(3.31)	0.76	1.14	11.8	13.2
	10(5.26)	1.14	1.52	15.9	17.8
5	18(0.824)	0.76	0.76	/	/
	17(1.04)	0.76	0.76	/	/
	16(1.31)	0.76	0.76	/	/
	15(1.65)	0.76	0.76	/	/
	14(2.08)	0.76	0.76	/	/
	12(3.31)	0.76	1.14	/	/
	10(5.26)	1.14	1.52	/	/
6	18(0.824)	0.76	0.76	/	/
	17(1.04)	0.76	0.76	/	/
	16(1.31)	0.76	0.76	/	/
	15(1.65)	0.76	0.76	/	/
	14(2.08)	0.76	0.76	/	/
	12(3.31)	0.76	1.14	/	/
	10(5.26)	1.14	1.52	/	/



ETL C(ETL) Model:SPT-1 Standards:UL62

No.of conductor	Nominal area (mm <sup>2</sup> )	Nominal thickness of insulation(mm)	Nominal thickness of sheath(mm)	Average of OD(mm)
2	20(0.519)	0.76	/	2.5x5.0
	18(0.824)	0.76	/	2.8x5.6
3	20(0.519)	0.76	/	2.5x7.0
	18(0.824)	0.76	/	2.8x8.0



ETL C(ETL) Model:SPT-2 Standards:UL62

No.of conductor	Nominal area (mm <sup>2</sup> )	Nominal thickness of insulation(mm)	Nominal thickness of sheath(mm)	Average of OD(mm)
2	18(0.824)	1.14	/	3.5x7.0
	16(1.31)	1.14	/	3.8x7.4
	14(2.08)	1.14	/	4.2x8.5
3	18(0.824)	1.14	/	3.5x9.0
	16(1.31)	1.14	/	3.8x10.0
4	14(2.08)	1.14	/	4.2x12.0



ETL C(ETL) Model:SPT-3 Standards:UL62

No.of conductor	Nominal area (mm <sup>2</sup> )	Nominal thickness of insulation(mm)	Nominal thickness of sheath(mm)	Average of OD(mm)
2	18(0.824)	1.52	/	4.4x8.8
	17(1.04)	1.52	/	4.6x9.2
	16(1.31)	1.52	/	4.7x9.5
	15(1.65)	2.03	/	5.8x11.6
	14(2.08)	2.03	/	6.0x12.0
	12(3.31)	2.41	/	7.5x14.0
	10(5.26)	2.79	/	8.8x17.6
	18(0.824)	1.52	/	4.4x10.8
3	17(1.04)	1.52	/	4.6x11.5
	16(1.31)	1.52	/	4.7x12.0
	15(1.65)	2.03	/	5.8x13.5
	14(2.08)	2.03	/	6.0x14.5
	12(3.31)	2.41	/	7.5x16.0
	10(5.26)	2.79	/	8.8x19.0
	18(0.824)	1.52	/	4.4x10.8



**UL C(UL) Model: ST Standards: UL62**  
**ETL C(ETL) Model: ST STO STOO STW STOW STOOV Standards: UL62**

No.of conductor	Nominal area (mm <sup>2</sup> )	Nominal thickness of insulation(mm)	Nominal thickness of sheath(mm)	Average of OD(mm)	
				Min	Max
2	18(0.824)	0.76	1.52	8.64	9.78
	17(1.04)	0.76	1.52	8.89	9.91
	16(1.31)	0.76	1.52	9.27	10.4
	15(1.65)	0.76	2.03	12.07	13.46
	14(2.08)	1.14	2.03	12.6	14.0
	12(3.31)	1.14	2.41	14.4	15.9
	10(5.26)	1.14	2.41	15.6	17.4
	8(8.37)	1.52	2.79	19.8	22.4
	6(13.3)	1.52	3.17	23.4	26.7
	4(21.1)	1.52	3.56	26.9	30.7
3	2(33.6)	1.52	3.94	30.7	35.6
	18(0.824)	0.76	1.52	9.14	10.2
	17(1.04)	0.76	1.52	9.40	10.54
	16(1.31)	0.76	1.52	9.78	10.9
	15(1.65)	0.76	2.03	12.70	14.22
	14(2.08)	1.14	2.03	13.2	14.6
	12(3.31)	1.14	2.41	15.0	16.6
	10(5.26)	1.14	2.41	16.5	18.3
	8(8.37)	1.52	2.79	21.1	23.6
	6(13.3)	1.52	3.17	24.6	27.9
4	4(21.1)	1.52	3.56	28.7	32.5
	2(33.6)	1.52	3.94	33.0	38.1
	18(0.824)	0.76	1.52	9.78	10.9
	17(1.04)	0.76	1.52	10.16	11.30
	16(1.31)	0.76	1.52	10.4	11.7
	15(1.65)	0.76	2.03	13.72	15.94
	14(2.08)	1.14	2.03	14.2	15.7
	12(3.31)	1.14	2.41	16.3	18.0
	10(5.26)	1.14	2.41	17.8	19.7
	8(8.37)	1.52	3.17	23.5	26.7
5	6(13.3)	1.52	3.56	26.7	30.5
	4(21.1)	1.52	3.94	31.8	36.8
	18(0.824)	0.76	2.03	11.7	13.0
	17(1.04)	0.76	2.03	11.81	13.21
	16(1.31)	0.76	2.03	12.5	14.0
	15(1.65)	0.76	2.41	15.62	17.52
	14(2.08)	1.14	2.41	16.0	17.9
	12(3.31)	1.14	2.41	17.8	19.6
	10(5.26)	1.14	2.41	19.3	21.3
	8(8.37)	1.52	3.17	25.4	29.2
6	6(13.3)	1.52	3.56	30.0	33.8
	4(21.1)	1.52	3.94	/	/
	2(33.6)	1.52	4.32	/	/



**ETL C(ETL) Model: SJ SJO SJOW SJOOV Standards: UL62**

No.of conductor	Nominal area (mm <sup>2</sup> )	Nominal thickness of insulation(mm)	Nominal thickness of sheath(mm)	Average of OD(mm)	
				Min	Max
2	18(0.824)	0.76	0.76	7.11	8.00
	17(1.04)	0.76	0.76	7.37	8.26
	16(1.31)	0.76	0.76	7.75	8.64
	15(1.65)	0.76	0.76	8.00	8.89
	14(2.08)	0.76	0.76	8.51	9.53
	12(3.31)	0.76	1.14	10.3	11.6
	10(5.26)	1.14	1.52	13.7	15.4
3	18(0.824)	0.76	0.76	7.62	8.51
	17(1.04)	0.76	0.76	7.87	8.76
	16(1.31)	0.76	0.76	8.26	9.14
	15(1.65)	0.76	0.76	8.51	9.52
	14(2.08)	0.76	0.76	9.14	10.0
	12(3.31)	0.76	1.14	10.8	12.1
4	10(5.26)	1.14	1.52	14.4	16.1
	18(0.824)	0.76	0.76	8.26	9.27
	17(1.04)	0.76	0.76	8.64	9.65
	16(1.31)	0.76	0.76	8.89	10.0
	15(1.65)	0.76	0.76	9.40	10.54
	14(2.08)	0.76	0.76	9.91	11.0
5	12(3.31)	0.76	1.14	11.8	13.2
	10(5.26)	1.14	1.52	15.9	17.8
	18(0.824)	0.76	0.76	/	/
	17(1.04)	0.76	0.76	/	/
	16(1.31)	0.76	0.76	/	/
	15(1.65)	0.76	0.76	/	/
6	14(2.08)	0.76	0.76	/	/
	12(3.31)	0.76	1.14	/	/
	10(5.26)	1.14	1.52	/	/
	18(0.824)	0.76	0.76	/	/
	17(1.04)	0.76	0.76	/	/
	16(1.31)	0.76	0.76	/	/
7	15(1.65)	0.76	0.76	/	/
	14(2.08)	0.76	0.76	/	/
	12(3.31)	0.76	1.14	/	/
	10(5.26)	1.14	1.52	/	/





ETL C(ETL) Model:S SO SOW SOOW Standards:UL62

No.of conductor	Nominal area (mm <sup>2</sup> )	Nominal thickness of insulation(mm)	Nominal thickness of sheath(mm)	Average of OD(mm)	
				Min	Max
2	18(0.824)	0.76	1.52	8.64	9.78
	17(1.04)	0.76	1.52	8.89	9.91
	16(1.31)	0.76	1.52	9.27	10.4
	15(1.65)	0.76	2.03	12.07	13.46
	14(2.08)	1.14	2.03	12.6	14.0
	12(3.31)	1.14	2.41	14.4	15.9
	10(5.26)	1.14	2.41	15.6	17.4
	8(8.37)	1.52	2.79	19.8	22.4
	6(13.3)	1.52	3.17	23.4	26.7
	4(21.1)	1.52	3.56	26.9	30.7
	2(33.6)	1.52	3.94	30.7	35.6
3	18(0.824)	0.76	1.52	9.14	10.2
	17(1.04)	0.76	1.52	9.40	10.54
	16(1.31)	0.76	1.52	9.78	10.9
	15(1.65)	0.76	2.03	12.70	14.22
	14(2.08)	1.14	2.03	13.2	14.6
	12(3.31)	1.14	2.41	15.0	16.6
	10(5.26)	1.14	2.41	16.5	18.3
	8(8.37)	1.52	2.79	21.1	23.6
	6(13.3)	1.52	3.17	24.6	27.9
	4(21.1)	1.52	3.56	28.7	32.5
	2(33.6)	1.52	3.94	33.0	38.1
4	18(0.824)	0.76	1.52	9.78	10.9
	17(1.04)	0.76	1.52	10.16	11.30
	16(1.31)	0.76	1.52	10.4	11.7
	15(1.65)	0.76	2.03	13.72	15.94
	14(2.08)	1.14	2.03	14.2	15.7
	12(3.31)	1.14	2.41	16.3	18.0
	10(5.26)	1.14	2.41	17.8	19.7
	8(8.37)	1.52	3.17	23.5	26.7
	6(13.3)	1.52	3.56	26.7	30.5
	4(21.1)	1.52	3.94	31.8	36.8
	2(33.6)	1.52	4.32	36.8	41.9
5	18(0.824)	0.76	2.03	11.7	13.0
	17(1.04)	0.76	2.03	11.81	13.21
	16(1.31)	0.76	2.03	12.5	14.0
	15(1.65)	0.76	2.41	15.62	17.52
	14(2.08)	1.14	2.41	16.0	17.9
	12(3.31)	1.14	2.41	17.8	19.6
	10(5.26)	1.14	2.41	19.3	21.3
	8(8.37)	1.52	3.17	25.4	29.2
	6(13.3)	1.52	3.56	30.0	33.8
	4(21.1)	1.52	3.94	/	/
	2(33.6)	1.52	4.32	/	/



ETL C(ETL) Model:HPN Standards:UL62

No.of conductor	Nominal area (mm <sup>2</sup> )	Nominal thickness of insulation(mm)	Nominal thickness of sheath(mm)	Average of OD(mm)
2	18(0.824)	1.14	/	3.5x7.0
	17(1.04)	1.14	/	3.7x7.4
	16(1.31)	1.14	/	3.8x7.6
	15(1.65)	1.52	/	5.0x9.0
	14(2.08)	1.52	/	6.5x11.7
	12(3.31)	2.41	/	7.9x13.7
3	18(0.824)	1.14	/	3.7x9.0
	17(1.04)	1.14	/	3.8x9.5
	16(1.31)	1.14	/	3.9x10.0
	15(1.65)	1.52	/	5.2x12.5
	14(2.08)	1.52	/	6.5x13.9
	12(3.31)	2.41	/	7.9x16.5

Battery Booster Cable

DIN 72553-16  
DIN 72553-25  
DIN 72553-35



Battery Booster Cable

DIN 72553-16 with LED  
DIN 72553-25 with LED



Battery Booster Cable

DIN 72553-16 with SMART  
DIN 72553-25 with SMART  
DIN 72553-35 with SMART





**DB20**

10A 250V~SAA



60227IEC53 3x0.75mm<sup>2</sup> 3x1.0mm<sup>2</sup>  
60245IEC57 3x0.75mm<sup>2</sup> 3x1.0mm<sup>2</sup>  
60245IEC66 3x1.0mm<sup>2</sup>

**DB21**

15A 250V~SAA



60227IEC53 3x1.5mm<sup>2</sup> 3x2.5mm<sup>2</sup>  
60245IEC57 3x1.5mm<sup>2</sup> 3x2.5mm<sup>2</sup>  
60245IEC66 3x1.5mm<sup>2</sup> 3x2.5mm<sup>2</sup>

**DB40**

18AWG 17AWG 16AWG



**PLUG**

SVT SVTO SVTOO SJT SJTO SJTOO  
SJTW SJTOW SJTOOW SV SVO SVOO  
SJ SJO SJOO SJW SJOW SJOW SV SVO  
SVOO SJ SJO SJOO SJW SJOW SJOW

**DB40+DB50**

16AWG



**EXTENSION CORD SETS**

SVT SVTO SVTOO SV SVO SVOO SJT SJTO  
SJTOO SJTW SJTOW SJTOOW SJ SJO SJOO  
SJW SJOW SJOW SJT SJTO SJTOO SJTW SJTOW  
SJTOOW SJ SJO SJOO SJW SJOW SJOW

**DB20+DB22**

10A 250V



**EXTENSION CORD SETS**

60227IEC53 3x1.0 3x1.5  
60245IEC57 3x1.0 3x1.5  
60245IEC66 3x1.0 3x1.5

**DB21+DB23**

15A 250V



**EXTENSION CORD SETS**

15A 250V  
60227IEC53 3x1.5 3x2.5  
60245IEC57 3x1.5 3x2.5  
60245IEC66 3x1.5 3x2.5



## DB41

18AWG 17AWG 16AWG



### PLUG

SVT SVTO SVTOO SJT SJTO SJTOO  
SJTW SJTOW SJTOOW SV SVO SVOO  
SJ SJO SJOO SJW SJOW SJOOW SV  
SVO SVOO SJ SJO SJOO SJW SJOW SJOOW

## DB41+DB51

16AWG

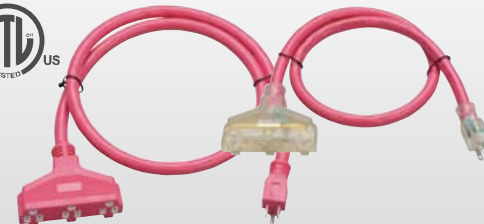


### EXTENSION CORD SETS

SVT SVTO SVTOO SV SVO SVOO SJT  
SJTO SJTOO SJTW SJTOW SJTOOW SJ  
SJO SJOO SJW SJOW SJOOW HPN SPT-2

## DB41A+DB52

14AWG 12AWG 10AWG



### EXTENSION CORD SETS

SJT SJTO SJTOO SJTW SJTOW SJTOOW SJ  
SJO SJOO SJW SJOW SJOOW ST STO STOO  
STW STOW STOOW S SO SOO SW SOW SOOW  
ST STO STOO STW STOW STOOW S SO  
SOO SW SOW SOOW

## DB42(NEMA5-50P)



SJT SJTO JJTOO SJTW SJTOW SJTOOW SJ SJO  
SJOO SJOW SJOOW 12AWG 10AWG  
ST STO STOO STW STOW STOOW S SO SOO  
SOW SOOW 12AWG 10AWG 8AWG 6AWG

## DB43(NEMA5-60P)



SJT SJTO JJTOO SJTW SJTOW SJTOOW SJ SJO  
SJOO SJOW SJOOW 12AWG 10AWG  
ST STO STOO STW STOW STOOW S SO SOO SOW  
SOOW 12AWG 10AWG 8AWG 6AWG

## DB53(NEMA6-50R)



SJT SJTO JJTOO SJTW SJTOW SJTOOW SJ SJO  
SJOO SJOW SJOOW 12AWG 10AWG  
ST STO STOO STW STOW STOOW S SO SOO  
SOW SOOW 12AWG 10AWG 8AWG 6AWG

## DB41A

14AWG 12AWG 10AWG



### PLUG

SJT SJTO  
SJTOO SJTW SJTOW SJTOOW SJ SJO SJOO  
SJW SJOW SJOOW ST STO STOO STW STOW  
STOOW S SO SOO SW SOW SOOW ST STO  
STOO STW STOW STOOW S SO SOO SW  
SOW SOOW HPN SPT-3

## DB41A+DB51A

14AWG 12AWG 10AWG



### EXTENSION CORD SETS

SJT SJTO  
SJTOO SJTW SJTOW SJTOOW SJ SJO SJOO SJW SJOW  
SJOOW ST STO STOO STW STOW STOOW S SO SOO SW  
SOW SOOW ST STO STOO STW STOW STOOW S SO SOO  
SW SOW SOOW HPN SPT-3

## DB54(NEMA5-50R)



SJT SJTO JJTOO SJTW SJTOW SJTOOW SJ SJO SJOO  
SJOW SJOOW 12AWG 10AWG  
ST STO STOO STW STOW STOOW S SO SOO SOW  
SOOW 12AWG 10AWG 8AWG 6AWG

## DB02

16A 250V~IP20



H05VVH2-F 2x0.75mm<sup>2</sup> 2x1.0mm<sup>2</sup>  
H05VV-F 2x0.75mm<sup>2</sup> 2x1.0mm<sup>2</sup>  
H05RN-F 2x0.75mm<sup>2</sup> 2x1.0mm<sup>2</sup>  
H07RN-F 2x1.0mm<sup>2</sup>

## DB03

16A 250V~IP20



H05VV-F 3G0.75mm<sup>2</sup> 3G1.0mm<sup>2</sup> 3G1.5mm<sup>2</sup>  
H05RN-F 3G0.75mm<sup>2</sup> 3G1.0mm<sup>2</sup>  
H05RR-F 3G1.5mm<sup>2</sup>  
H07RN-F 3G1.0mm<sup>2</sup> 3G1.5mm<sup>2</sup>

## DB05

16A 250V~IP44



H05RN-F 3G0.75mm<sup>2</sup> 3G1.0mm<sup>2</sup>  
H05RR-F 3G1.5mm<sup>2</sup>  
H07RN-F 3G1.0mm<sup>2</sup> 3G1.5mm<sup>2</sup>

## DB08



SVT 18AWGx3C 16AWGx3C  
SJT 18AWGx3C 16AWGx3C  
SJTW 18AWGx3C 16AWGx3C

## DB60



3A 250V H03VVH2-F 2x0.5mm<sup>2</sup> H03VV-F 2x0.5mm<sup>2</sup> 3G0.5mm<sup>2</sup>  
7A 250V H03VVH2-F H05VVH2-F 2x0.75mm<sup>2</sup> H03VV-F H05VV-F  
H05RN-F H05RR-F 2x0.75mm<sup>2</sup> 3G0.75mm<sup>2</sup>  
10A 250V H05VVH2-F 2x1.0mm<sup>2</sup> H05VV-F H05RN-F H05RR-F  
H07RN-F 2x1.0mm<sup>2</sup> 3G1.0mm<sup>2</sup>  
13A 250V H05VV-F H05RR-F H07RN-F 2x1.5mm<sup>2</sup> 3G1.5mm<sup>2</sup>

## DB09

10A 250V~



60227IEC53(RVV) 3x0.75mm<sup>2</sup> 3x1.0mm<sup>2</sup>  
60245IEC53(YZ) 3x0.75mm<sup>2</sup> 3x1.0mm<sup>2</sup>  
60245IEC57(YZW) 3x0.75mm<sup>2</sup> 3x1.0mm<sup>2</sup>

## DB11

16A 250V



60227IEC 53(RVV) 60245 IEC53(YZ)  
60245 IEC57(YZW) 60245 IEC66(YCW)  
3x1.0mm<sup>2</sup> 3x1.5mm<sup>2</sup> 3x2.5mm<sup>2</sup>

## DB61

10A 250V



H03VV-F 3G0.75mm<sup>2</sup> H05RN-F 3G0.75mm<sup>2</sup> 3G1.0mm<sup>2</sup>  
H05VV-F H05RR-F 3G0.75mm<sup>2</sup> 3G1.0mm<sup>2</sup> 3G1.5mm<sup>2</sup>  
H07RN-F 3G1.0mm<sup>2</sup> 3G1.5mm<sup>2</sup>

## DB62

12A 16A 20A 250V



12A H05VV-F H05RN-F H05RR-F H07RN-F 3G1.0mm<sup>2</sup>  
16A H05VV-F H05RR-F H07RN-F 3G1.5mm<sup>2</sup>  
20A H05VV-F H05RR-F H07RN-F 3G2.5mm<sup>2</sup>

## DB10+DB15

10A 250V~



60245IEC53(YZ) 3x0.75mm<sup>2</sup> 3x1.0mm<sup>2</sup>  
60245IEC57(YZW) 3x0.75mm<sup>2</sup> 3x1.0mm<sup>2</sup>

## DB05+DB31



**EXTENSION CORD SETS**  
16A 250V  
H05RR-F 3G1.5  
H07RN-F 3G1.5

16A 250V~SABS



H05VV-F 3G0.75mm<sup>2</sup> 3G1.0mm<sup>2</sup> 3G1.5mm<sup>2</sup>  
H05RN-F 3G0.75mm<sup>2</sup> 3G1.0mm<sup>2</sup>  
H05RR-F 3G1.5mm<sup>2</sup>  
H07RN-F 3G1.0mm<sup>2</sup> 3G1.5mm<sup>2</sup>

10A 250V~



H05VV-F 3G0.75mm<sup>2</sup> 3G1.0mm<sup>2</sup>  
H05RN-F 3G0.75mm<sup>2</sup> 3G1.0mm<sup>2</sup>  
H07RN-F 3G1.0mm<sup>2</sup>